

CD25 Rabbit mAb

Catalog No: #56392

Package Size: #56392-1 50ul #56392-2 100ul

Orders: order@signalwayantibody.comSupport: tech@signalwayantibody.com

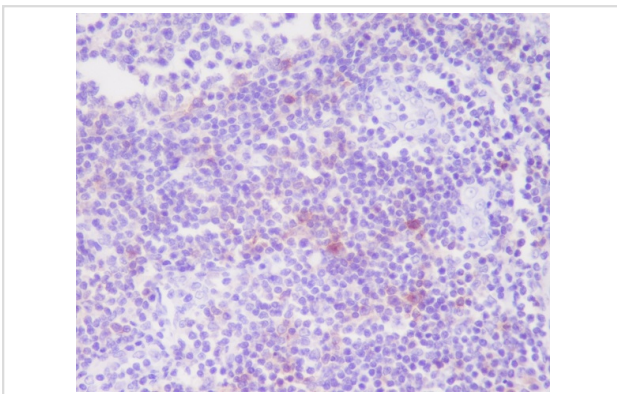
Description

Product Name	CD25 Rabbit mAb
Host Species	Rabbit
Clonality	Monoclonal
Isotype	Rabbit IgG
Purification	Affinity-chromatography
Applications	IHC ICC/IF
Species Reactivity	Human
Specificity	CD25 Antibody detects endogenous levels of total CD25
Immunogen Description	A synthesized peptide derived from human CD25
Other Names	CD25; IDDM10; IL-2-RA; IL2 RA; IL2R; IL2RA; IMD4; p55; TAC; TCGFR;
Accession No.	Uniprot:P01589
Calculated MW	kDa
Storage	Rabbit IgG in phosphate buffered saline , pH 7.4, 150mM NaCl, 0.02% sodium azide and 50% glycerol. Store at +4°C short term. Store at -20°C long term. Avoid freeze / thaw cycle.

Application Details

IHC:1:50~1:200 ICC/IF:1:50~1:200

Images



Immunohistochemical analysis of paraffin-embedded human tonsil, using CD25 Antibody.

Product Description

Receptor for interleukin-2.

Note: This product is for in vitro research use only and is not intended for use in humans or animals.