

GRB7 Rabbit mAb

Catalog No: #56403

Package Size: #56403-1 50ul #56403-2 100ul

Orders: order@signalwayantibody.comSupport: tech@signalwayantibody.com

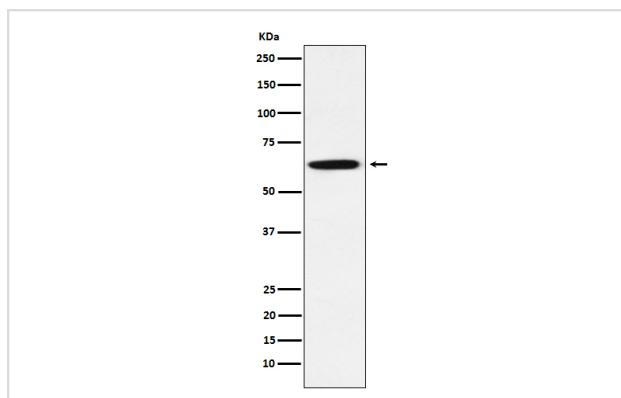
Description

Product Name	GRB7 Rabbit mAb
Host Species	Rabbit
Clonality	Monoclonal
Isotype	Rabbit IgG
Purification	Affinity-chromatography
Applications	WB IHC
Species Reactivity	Human Mouse Rat
Specificity	GRB7 Antibody detects endogenous levels of total GRB7
Immunogen Description	A synthesized peptide derived from human GRB7
Other Names	B47; Epidermal growth factor receptor GRB 7; GRB7 adapter protein; GRB7;
Accession No.	Uniprot:Q14451
Calculated MW	60kDa
Formulation	Rabbit IgG in phosphate buffered saline , pH 7.4, 150mM NaCl, 0.02% sodium azide and 50% glycerol.
Storage	Store at +4°C short term. Store at -20°C long term. Avoid freeze / thaw cycle.

Application Details

WB:1:1000~1:5000IHC:1:100~1:500

Images



Western blot analysis of GRB7 expression in A431 cell lysate.

Product Description

Interacts with the cytoplasmic domain of the epidermal growth factor receptor which is then inhibited. The interaction is mediated by the SH2 domain. Also binds to ERBB2.

Note: This product is for in vitro research use only and is not intended for use in humans or animals.