

GCET2 Rabbit mAb

Catalog No: #56404



Package Size: #56404-1 50ul #56404-2 100ul

Orders: order@signalwayantibody.comSupport: tech@signalwayantibody.com

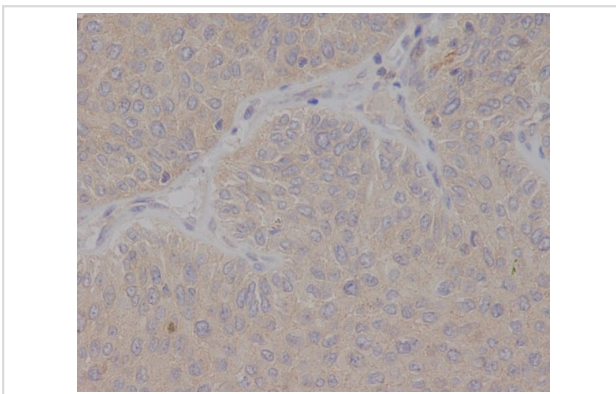
Description

Product Name	GCET2 Rabbit mAb
Host Species	Rabbit
Clonality	Monoclonal
Isotype	Rabbit IgG
Purification	Affinity-chromatography
Applications	IHC ICC/IF FC
Species Reactivity	Human
Specificity	GCET2 Antibody detects endogenous levels of total GCET2
Immunogen Description	A synthesized peptide derived from human GCET2
Other Names	GCAT2; Gcet; Gcsam; hGAL; M17; M17 L;
Accession No.	Uniprot:Q8N6F7
Calculated MW	kDa
Storage	Rabbit IgG in phosphate buffered saline , pH 7.4, 150mM NaCl, 0.02% sodium azide and 50% glycerol. Store at +4°C short term. Store at -20°C long term. Avoid freeze / thaw cycle.

Application Details

IHC:1:100~1:500 ICC/IF:1:100~1:500 FC:1:100

Images



Immunohistochemical analysis of paraffin-embedded human bladder cancer, using GCET2 Antibody.

Product Description

Involved in the negative regulation of lymphocyte motility. It mediates the migration-inhibitory effects of IL6. Serves as a positive regulator of the RhoA signaling pathway. Enhancement of RhoA activation results in inhibition of lymphocyte and lymphoma cell motility by activation of its downstream effector ROCK. Is a regulator of B-cell receptor signaling, that acts through SYK kinase activation.

Note: This product is for in vitro research use only and is not intended for use in humans or animals.