

NKX2.2 Rabbit mAb

Catalog No: #56405



Package Size: #56405-1 50ul #56405-2 100ul

Orders: order@signalwayantibody.comSupport: tech@signalwayantibody.com

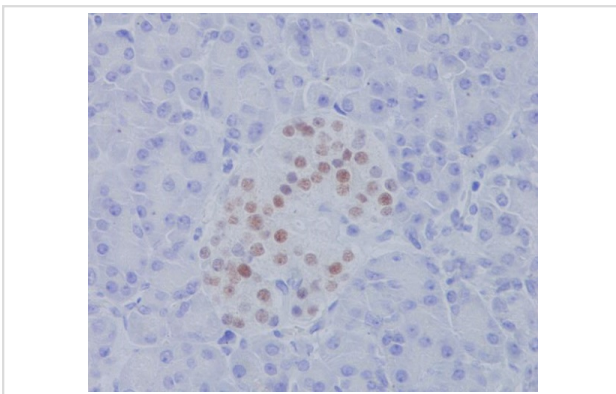
Description

Product Name	NKX2.2 Rabbit mAb
Host Species	Rabbit
Clonality	Monoclonal
Isotype	Rabbit IgG
Purification	Affinity-chromatography
Applications	IHC ICC/IF
Species Reactivity	Human Mouse Rat
Specificity	NKX2.2 Antibody detects endogenous levels of total NKX2.2
Immunogen Description	A synthesized peptide derived from human NKX2.2
Other Names	Homeobox protein Nkx 2.2; NK 2 homolog B; NK2 homeobox 2; NKX2 2; NKX22; Nkx2b;
Accession No.	Uniprot:O95096
Calculated MW	kDa
Storage	Rabbit IgG in phosphate buffered saline , pH 7.4, 150mM NaCl, 0.02% sodium azide and 50% glycerol. Store at +4°C short term. Store at -20°C long term. Avoid freeze / thaw cycle.

Application Details

IHC:1:100~1:500 ICC/IF:1:50~1:100

Images



Immunohistochemical analysis of paraffin-embedded human pancreas, using NKX2.2 Antibody.

Product Description

May be involved in specifying diencephalic neuromeric boundaries, and in controlling the expression of genes that play a role in axonal guidance.

Note: This product is for in vitro research use only and is not intended for use in humans or animals.