

MEF2C Rabbit mAb

Catalog No: #56411

Package Size: #56411-1 50ul #56411-2 100ul

Orders: order@signalwayantibody.comSupport: tech@signalwayantibody.com

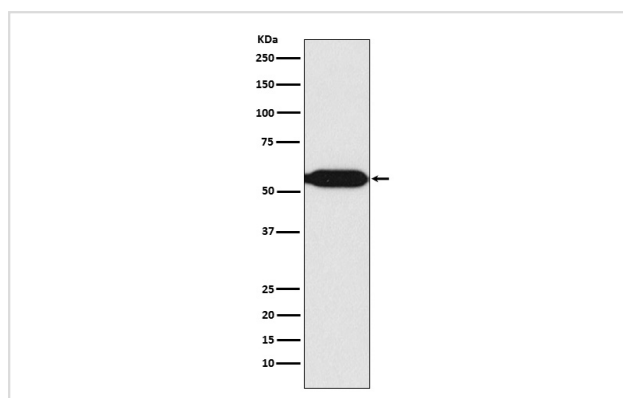
Description

Product Name	MEF2C Rabbit mAb
Host Species	Rabbit
Clonality	Monoclonal
Isotype	Rabbit IgG
Purification	Affinity-chromatography
Applications	WB IHC
Species Reactivity	Human Rat
Specificity	MEF2C Antibody detects endogenous levels of total MEF2C
Immunogen Description	A synthesized peptide derived from human MEF2C
Other Names	C5DELq14.3; DEL5q14.3; MEF2C;
Accession No.	Uniprot:Q06413
Calculated MW	50-60kDa
Formulation	Rabbit IgG in phosphate buffered saline , pH 7.4, 150mM NaCl, 0.02% sodium azide and 50% glycerol.
Storage	Store at +4°C short term. Store at -20°C long term. Avoid freeze / thaw cycle.

Application Details

WB:1:500~1:2000IHC:1:100~1:500

Images



Western blot analysis of MEF2C expression in Raji cell lysate.

Product Description

Transcription activator which binds specifically to the MEF2 element present in the regulatory regions of many muscle-specific genes. Controls cardiac morphogenesis and myogenesis, and is also involved in vascular development. Plays an essential role in hippocampal-dependent learning and memory by suppressing the number of excitatory synapses and thus regulating basal and evoked synaptic transmission.

Note: This product is for in vitro research use only and is not intended for use in humans or animals.