

ALDH1A2 Rabbit mAb

Catalog No: #56420

Package Size: #56420-1 50ul #56420-2 100ul

Orders: order@signalwayantibody.comSupport: tech@signalwayantibody.com

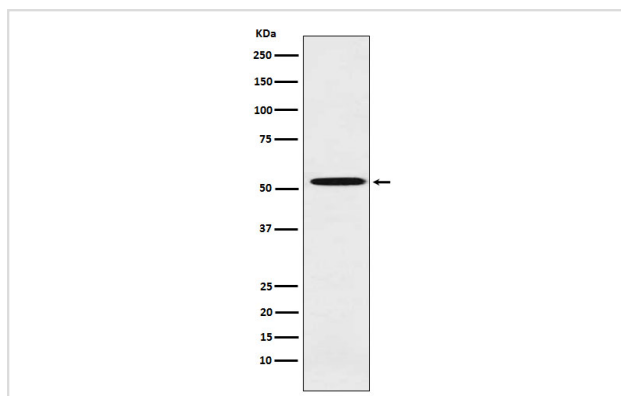
Description

Product Name	ALDH1A2 Rabbit mAb
Host Species	Rabbit
Clonality	Monoclonal
Isotype	Rabbit IgG
Purification	Affinity-chromatography
Applications	WB
Species Reactivity	Human Mouse Rat
Specificity	ALDH1A2 Antibody detects endogenous levels of total ALDH1A2
Immunogen Description	A synthesized peptide derived from human ALDH1A2
Other Names	ALDH1A2; Aldh1a7; AV116159; RALDH 2; RALDH(II); Raldh1; RalDH2; RALDH2 T;
Accession No.	Uniprot:O94788
Calculated MW	57kDa
Formulation	Rabbit IgG in phosphate buffered saline , pH 7.4, 150mM NaCl, 0.02% sodium azide and 50% glycerol.
Storage	Store at +4°C short term. Store at -20°C long term. Avoid freeze / thaw cycle.

Application Details

WB: 1:500~1:2000

Images



Western blot analysis of ALDH1A2 expression in Molt4 cell lysate.

Product Description

Recognizes as substrates free retinal and cellular retinol-binding protein-bound retinal. Does metabolize octanal and decanal but does not metabolize citral, benzaldehyde, acetaldehyde and propanal efficiently.

Note: This product is for in vitro research use only and is not intended for use in humans or animals.