

## CD162 Rabbit mAb

Catalog No: #56423

Package Size: #56423-1 50ul #56423-2 100ul

Orders: [order@signalwayantibody.com](mailto:order@signalwayantibody.com)Support: [tech@signalwayantibody.com](mailto:tech@signalwayantibody.com)

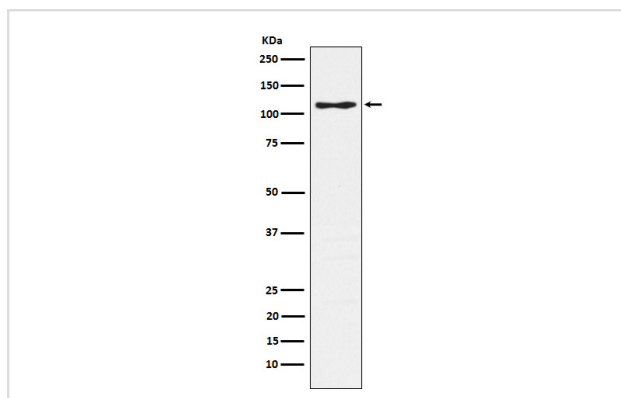
## Description

Product Name	CD162 Rabbit mAb
Host Species	Rabbit
Clonality	Monoclonal
Isotype	Rabbit IgG
Purification	Affinity-chromatography
Applications	WB IHC ICC/IF IP
Species Reactivity	Human
Specificity	CD162 Antibody detects endogenous levels of total CD162
Immunogen Description	A synthesized peptide derived from human CD162
Other Names	CD162; CLA; PSGL1; SELPLG;
Accession No.	Uniprot:Q14242
Calculated MW	120kDa
Formulation	Rabbit IgG in phosphate buffered saline , pH 7.4, 150mM NaCl, 0.02% sodium azide and 50% glycerol.
Storage	Store at +4°C short term. Store at -20°C long term. Avoid freeze / thaw cycle.

## Application Details

WB:1:500~1:1000IHC:1:50~1:200ICC/IF:1:50~1:200IP:1:40

## Images



Western blot analysis of CD162 expression in Jurkat cell lysate.

## Product Description

A SLe(x)-type proteoglycan, which through high affinity, calcium-dependent interactions with E-, P- and L-selectins, mediates rapid rolling of leukocytes over vascular surfaces during the initial steps in inflammation. Critical for the initial leukocyte capture.

---

Note: This product is for in vitro research use only and is not intended for use in humans or animals.