

eIF4A1 Rabbit mAb

Catalog No: #56446

Package Size: #56446-1 50ul #56446-2 100ul

Orders: order@signalwayantibody.com

Support: tech@signalwayantibody.com

Description

| | |
|-----------------------|--|
| Product Name | eIF4A1 Rabbit mAb |
| Host Species | Rabbit |
| Clonality | Monoclonal |
| Isotype | Rabbit IgG |
| Purification | Affinity-chromatography |
| Applications | WB ICC/IF FC |
| Species Reactivity | Human Mouse Rat |
| Specificity | eIF4A1 Antibody detects endogenous levels of total eIF4A1 |
| Immunogen Description | A synthesized peptide derived from human eIF4A1 |
| Other Names | DDX2; DDX2A; eIF 4A I; EIF4A; eIF4A I; eIF4A-I; EIF4A1; |
| Accession No. | Uniprot:P60842 |
| Calculated MW | 46kDa |
| Formulation | Rabbit IgG in phosphate buffered saline , pH 7.4, 150mM NaCl, 0.02% sodium azide and 50% glycerol. |
| Storage | Store at +4°C short term. Store at -20°C long term. Avoid freeze / thaw cycle. |

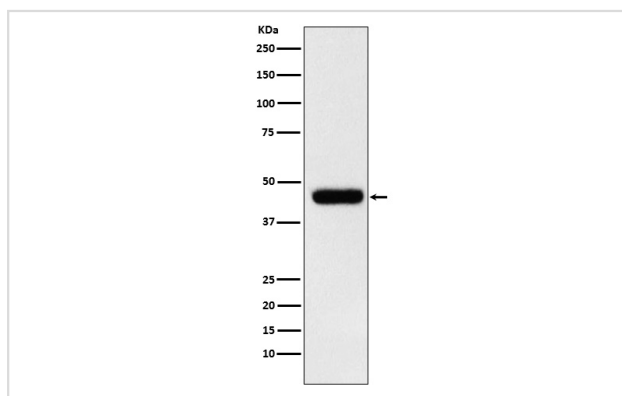
Application Details

WB:1:500~1:2000

ICC/IF:1:50~1:200

FC:1:50

Images



Western blot analysis of eIF4A1 expression in MCF7 cell lysate.

Product Description

ATP-dependent RNA helicase which is a subunit of the eIF4F complex involved in cap recognition and is required for mRNA binding to ribosome.

Note: This product is for in vitro research use only and is not intended for use in humans or animals.