

## CXCL11 Rabbit mAb

Catalog No: #56449

Package Size: #56449-1 50ul #56449-2 100ul

Orders: [order@signalwayantibody.com](mailto:order@signalwayantibody.com)Support: [tech@signalwayantibody.com](mailto:tech@signalwayantibody.com)

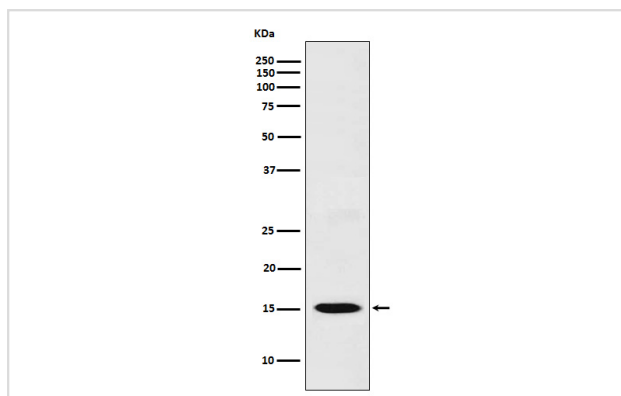
## Description

Product Name	CXCL11 Rabbit mAb
Host Species	Rabbit
Clonality	Monoclonal
Isotype	Rabbit IgG
Purification	Affinity-chromatography
Applications	WB ICC/IF
Species Reactivity	Human
Specificity	CXCL11 Antibody detects endogenous levels of total CXCL11
Immunogen Description	A synthesized peptide derived from human CXCL11
Other Names	betaR; CXC11; CXCL11; H174; I TAC; IP9; ITAC; SCYB11; SCYB9B;
Accession No.	Uniprot:O14625
Calculated MW	15kDa
Formulation	Rabbit IgG in phosphate buffered saline , pH 7.4, 150mM NaCl, 0.02% sodium azide and 50% glycerol.
Storage	Store at +4°C short term. Store at -20°C long term. Avoid freeze / thaw cycle.

## Application Details

WB:1:500~1:2000 ICC/IF:1:50~1:200

## Images



Western blot analysis of CXCL11 expression in THP1 cell lysate.

## Product Description

Chemotactic for interleukin-activated T-cells but not unstimulated T-cells, neutrophils or monocytes. Induces calcium release in activated T-cells. Binds to CXCR3. May play an important role in CNS diseases which involve T-cell recruitment. May play a role in skin immune responses.

---

Note: This product is for in vitro research use only and is not intended for use in humans or animals.