

MC1 Receptor Rabbit mAb

Catalog No: #56457

Package Size: #56457-1 50ul #56457-2 100ul

Orders: order@signalwayantibody.comSupport: tech@signalwayantibody.com

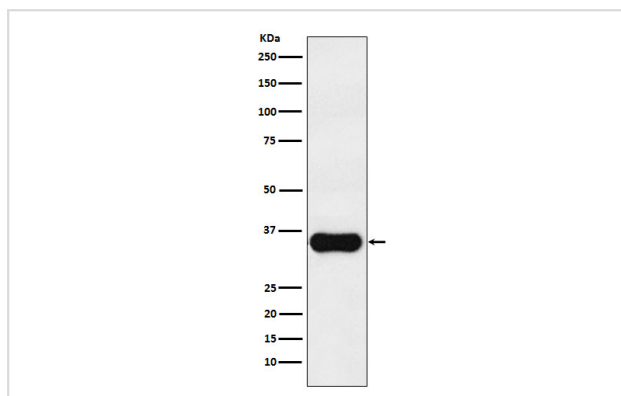
Description

| | |
|-----------------------|--|
| Product Name | MC1 Receptor Rabbit mAb |
| Host Species | Rabbit |
| Clonality | Monoclonal |
| Isotype | Rabbit IgG |
| Purification | Affinity-chromatography |
| Applications | WB IHC |
| Species Reactivity | Human |
| Specificity | MC1 Receptor Antibody detects endogenous levels of total MC1 Receptor |
| Immunogen Description | A synthesized peptide derived from human MC1 Receptor |
| Other Names | CMM5; MC1R; MSHR; SHEP2; |
| Accession No. | Uniprot:Q01726 |
| Calculated MW | 35kDa |
| Formulation | Rabbit IgG in phosphate buffered saline , pH 7.4, 150mM NaCl, 0.02% sodium azide and 50% glycerol. |
| Storage | Store at +4°C short term. Store at -20°C long term. Avoid freeze / thaw cycle. |

Application Details

WB:1:500~1:2000IHC:1:100~1:500

Images



Western blot analysis of MC1 Receptor expression in A375 cell lysate.

Product Description

Receptor for MSH (alpha, beta and gamma) and ACTH. The activity of this receptor is mediated by G proteins which activate adenylate cyclase.

Note: This product is for in vitro research use only and is not intended for use in humans or animals.