

DARC Rabbit mAb

Catalog No: #56458

Package Size: #56458-1 50ul #56458-2 100ul

Orders: order@signalwayantibody.comSupport: tech@signalwayantibody.com

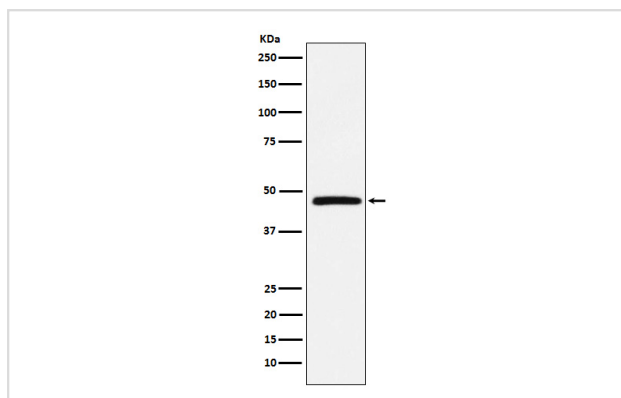
Description

Product Name	DARC Rabbit mAb
Host Species	Rabbit
Clonality	Monoclonal
Isotype	Rabbit IgG
Purification	Affinity-chromatography
Applications	WB IHC ICC/IF IP FC
Species Reactivity	Human Mouse
Specificity	DARC Antibody detects endogenous levels of total DARC
Immunogen Description	A synthesized peptide derived from human DARC
Other Names	CCBP1; CD234; DARC; Dfy; FY; GPD; GpFy; WBCQ1;
Accession No.	Uniprot:Q16570
Calculated MW	35kDa
Formulation	Rabbit IgG in phosphate buffered saline , pH 7.4, 150mM NaCl, 0.02% sodium azide and 50% glycerol.
Storage	Store at +4°C short term. Store at -20°C long term. Avoid freeze / thaw cycle.

Application Details

WB:1:500~1:2000IHC:1:50~1:200ICC/IF:1:50~1:200IP:1:50FC:1:100

Images



Western blot analysis of DARC expression in Human fetal liver lysate.

Product Description

Non-specific receptor for many chemokines such as IL-8, GRO, RANTES, MCP-1 and TARC. It is also the receptor for the human malaria parasites *Plasmodium vivax* and *Plasmodium knowlesi*.

Note: This product is for in vitro research use only and is not intended for use in humans or animals.