

Guanylyl Cyclase beta 1 Rabbit mAb

Catalog No: #56465

Package Size: #56465-1 50ul #56465-2 100ul

Orders: order@signalwayantibody.comSupport: tech@signalwayantibody.com

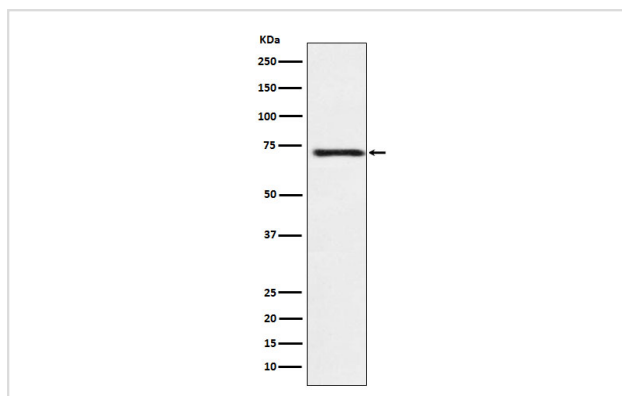
Description

Product Name	Guanylyl Cyclase beta 1 Rabbit mAb
Host Species	Rabbit
Clonality	Monoclonal
Isotype	Rabbit IgG
Purification	Affinity-chromatography
Applications	WB IHC
Species Reactivity	Human Mouse Rat
Specificity	Guanylyl Cyclase beta 1 Antibody detects endogenous levels of total Guanylyl Cyclase beta 1
Immunogen Description	A synthesized peptide derived from human Guanylyl Cyclase beta 1
Other Names	GCbeta1; GCS beta 1; GCS beta 3; GUC1B3; GUCSB3; GUCY1B1; Gucy1b1; GUCY1B3; SGC;
Accession No.	Uniprot:Q02153
Calculated MW	71kDa
Formulation	Rabbit IgG in phosphate buffered saline , pH 7.4, 150mM NaCl, 0.02% sodium azide and 50% glycerol.
Storage	Store at +4°C short term. Store at -20°C long term. Avoid freeze / thaw cycle.

Application Details

WB:1:500~1:2000IHC:1:50~1:200

Images



Western blot analysis of Guanylyl Cyclase beta 1 expression in Human fetal brain lysate.

Product Description

Mediates responses to nitric oxide (NO) by catalyzing the biosynthesis of the signaling molecule cGMP.

Note: This product is for in vitro research use only and is not intended for use in humans or animals.