

## Destrin Rabbit mAb

Catalog No: #56467

Package Size: #56467-1 50ul #56467-2 100ul

Orders: order@signalwayantibody.com

Support: tech@signalwayantibody.com

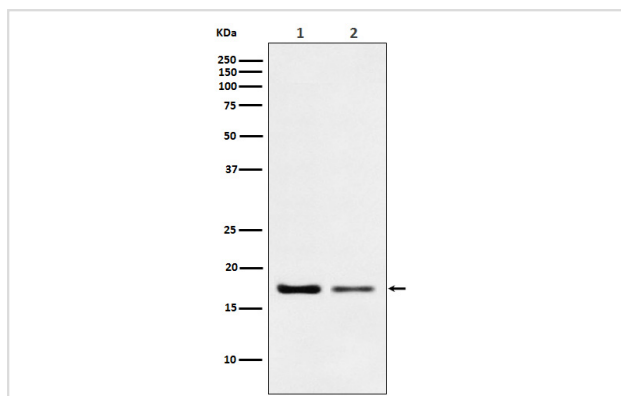
## Description

Product Name	Destrin Rabbit mAb
Host Species	Rabbit
Clonality	Monoclonal
Isotype	Rabbit IgG
Purification	Affinity-chromatography
Applications	WB IHC ICC/IF IP FC
Species Reactivity	Human Mouse Rat
Specificity	Destrin Antibody detects endogenous levels of total Destrin
Immunogen Description	A synthesized peptide derived from human Destrin
Other Names	ACTDP; ADF; corn1; Destrin; DSN; Dstn; HEL32; Sid 23; sid23p;
Accession No.	Uniprot:P60981
Calculated MW	17kDa
Formulation	Rabbit IgG in phosphate buffered saline , pH 7.4, 150mM NaCl, 0.02% sodium azide and 50% glycerol.
Storage	Store at +4°C short term. Store at -20°C long term. Avoid freeze / thaw cycle.

## Application Details

WB:1:500~1:2000IHC:1:50~1:200ICC/IF:1:100~1:500IP:1:50FC:1:100

## Images



Western blot analysis of Destrin expression in (1) HeLa cell lysate; (2) NIH/3T3 cell lysate.

## Product Description

Actin-depolymerizing protein. Severs actin filaments (F-actin) and binds to actin monomers (G-actin). Acts in a pH-independent manner.

---

Note: This product is for in vitro research use only and is not intended for use in humans or animals.