

C4 binding protein Rabbit mAb

Catalog No: #56474

Package Size: #56474-1 50ul #56474-2 100ul

Orders: order@signalwayantibody.com

Support: tech@signalwayantibody.com

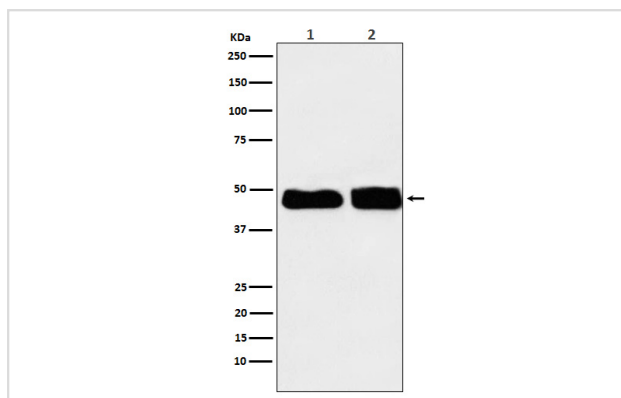
Description

Product Name	C4 binding protein Rabbit mAb
Host Species	Rabbit
Clonality	Monoclonal
Isotype	Rabbit IgG
Purification	Affinity-chromatography
Applications	WB IHC ICC/IF IP
Species Reactivity	Human Rat
Specificity	C4 binding protein Antibody detects endogenous levels of total C4 binding protein
Immunogen Description	A synthesized peptide derived from human C4 binding protein
Other Names	C4BP; C4BPB; PRP;
Accession No.	Uniprot:P20851
Calculated MW	45kDa
Formulation	Rabbit IgG in phosphate buffered saline , pH 7.4, 150mM NaCl, 0.02% sodium azide and 50% glycerol.
Storage	Store at +4°C short term. Store at -20°C long term. Avoid freeze / thaw cycle.

Application Details

WB:1:500~1:1000IHC:1:100~1:500ICC/IF:1:50~1:200IP:1:60

Images



Western blot analysis of C4 binding protein expression in (1) Human plasma lysate; (2) Rat plasma lysate.

Product Description

Controls the classical pathway of complement activation. It binds as a cofactor to C3b/C4b inactivator (C3bINA), which then hydrolyzes the complement fragment C4b.

Note: This product is for in vitro research use only and is not intended for use in humans or animals.