

beta Casein Rabbit mAb

Catalog No: #56476

Package Size: #56476-1 50ul #56476-2 100ul

Orders: order@signalwayantibody.comSupport: tech@signalwayantibody.com

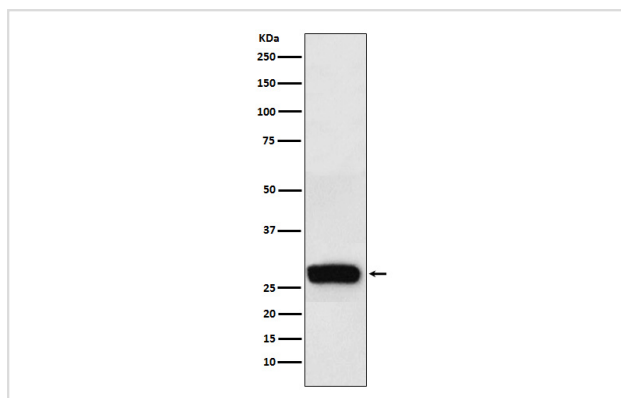
Description

Product Name	beta Casein Rabbit mAb
Host Species	Rabbit
Clonality	Monoclonal
Isotype	Rabbit IgG
Purification	Affinity-chromatography
Applications	WB IP
Species Reactivity	Human
Specificity	beta Casein Antibody detects endogenous levels of total beta Casein
Immunogen Description	A synthesized peptide derived from human beta Casein
Other Names	Beta-casein; CASB; Casein beta; Csn2;
Accession No.	Uniprot:P05814
Calculated MW	25kDa
Formulation	Rabbit IgG in phosphate buffered saline , pH 7.4, 150mM NaCl, 0.02% sodium azide and 50% glycerol.
Storage	Store at +4°C short term. Store at -20°C long term. Avoid freeze / thaw cycle.

Application Details

WB:1:500~1:1000IP:1:50

Images



Western blot analysis of beta Casein expression in Human milk lysate.

Product Description

Important role in determination of the surface properties of the casein micelles.

Note: This product is for in vitro research use only and is not intended for use in humans or animals.