

## ATP2A1/SERCA1 Rabbit mAb

Catalog No: #56484

Package Size: #56484-1 50ul #56484-2 100ul

Orders: order@signalwayantibody.com

Support: tech@signalwayantibody.com

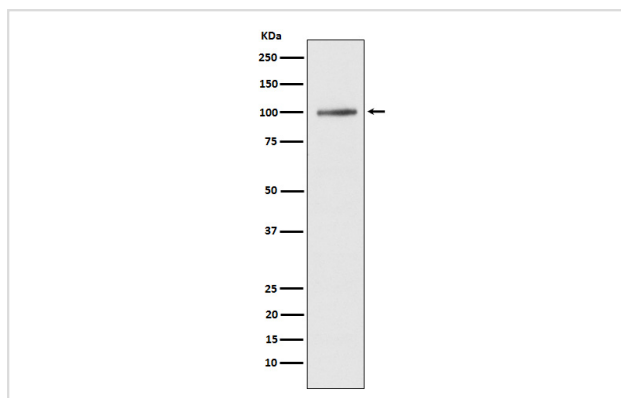
## Description

Product Name	ATP2A1/SERCA1 Rabbit mAb
Host Species	Rabbit
Clonality	Monoclonal
Isotype	Rabbit IgG
Purification	Affinity-chromatography
Applications	WB IHC IP
Species Reactivity	Human
Specificity	ATP2A1/SERCA1 Antibody detects endogenous levels of total ATP2A1/SERCA1
Immunogen Description	A synthesized peptide derived from human ATP2A1/SERCA1
Other Names	ATP2A; ATP2A1; SERCA1;
Accession No.	Uniprot:O14983
Calculated MW	100kDa
Formulation	Rabbit IgG in phosphate buffered saline , pH 7.4, 150mM NaCl, 0.02% sodium azide and 50% glycerol.
Storage	Store at +4°C short term. Store at -20°C long term. Avoid freeze / thaw cycle.

## Application Details

WB:1:1000~1:5000IHC:1:50~1:200IP:1:50

## Images



Western blot analysis of ATP2A1/SERCA1 expression in human fetal muscle lysate.

## Product Description

Key regulator of striated muscle performance by acting as the major Ca<sup>2+</sup> ATPase responsible for the reuptake of cytosolic Ca<sup>2+</sup> into the sarcoplasmic reticulum. Catalyzes the hydrolysis of ATP coupled with the translocation of calcium from the cytosol to the sarcoplasmic reticulum lumen. Contributes to calcium sequestration involved in muscular excitation/contraction.

---

Note: This product is for in vitro research use only and is not intended for use in humans or animals.