

## SRSF3 Rabbit mAb

Catalog No: #56488

Package Size: #56488-1 50ul #56488-2 100ul

Orders: order@signalwayantibody.com

Support: tech@signalwayantibody.com

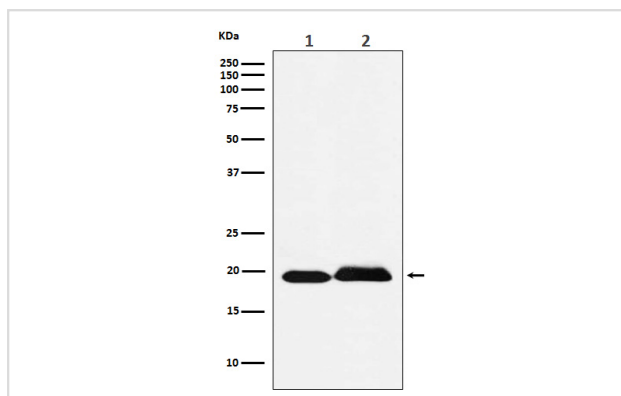
## Description

Product Name	SRSF3 Rabbit mAb
Host Species	Rabbit
Clonality	Monoclonal
Isotype	Rabbit IgG
Purification	Affinity-chromatography
Applications	WB IHC ICC/IF FC
Species Reactivity	Mouse, Rat, Human
Specificity	SRSF3 Antibody detects endogenous levels of total SRSF3
Immunogen Description	A synthesized peptide derived from human SRSF3
Other Names	Splicing factor; SRp20; SRSF3; X16;
Accession No.	Uniprot:P84103
Calculated MW	19kDa
Formulation	Rabbit IgG in phosphate buffered saline , pH 7.4, 150mM NaCl, 0.02% sodium azide and 50% glycerol.
Storage	Store at +4°C short term. Store at -20°C long term. Avoid freeze / thaw cycle.

## Application Details

WB:1:500~1:2000IHC:1:50~1:200ICC/IF:1:50~1:200FC:1:100

## Images



Western blot analysis of SRSF3 expression in (1) Jurkat cell lysate; (2) Rat brain lysate.

## Product Description

May be involved in RNA processing in relation with cellular proliferation and/or maturation.

---

Note: This product is for in vitro research use only and is not intended for use in humans or animals.