

## Dlx5 Rabbit mAb

Catalog No: #56491

Package Size: #56491-1 50ul #56491-2 100ul

Orders: order@signalwayantibody.com

Support: tech@signalwayantibody.com

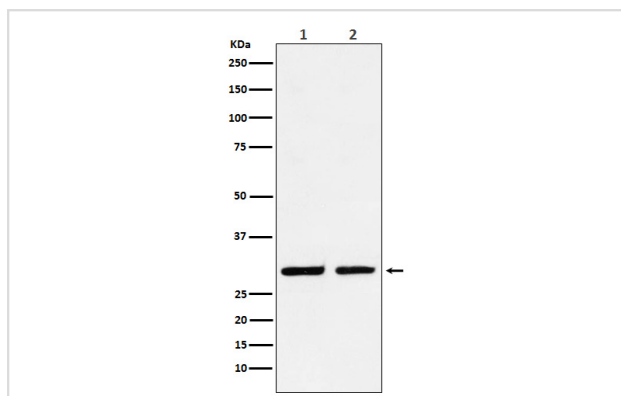
## Description

Product Name	Dlx5 Rabbit mAb
Host Species	Rabbit
Clonality	Monoclonal
Isotype	Rabbit IgG
Purification	Affinity-chromatography
Applications	WB IHC ICC/IF IP
Species Reactivity	Human Mouse Rat
Specificity	Dlx5 Antibody detects endogenous levels of total Dlx5
Immunogen Description	A synthesized peptide derived from human Dlx5
Other Names	Distal less homeo box 5; Dlx 5; Homeo box protein DLX 5;
Accession No.	Uniprot:P56178
Calculated MW	32kDa
Formulation	Rabbit IgG in phosphate buffered saline , pH 7.4, 150mM NaCl, 0.02% sodium azide and 50% glycerol.
Storage	Store at +4°C short term. Store at -20°C long term. Avoid freeze / thaw cycle.

## Application Details

WB:1:500~1:2000IHC:1:100~1:500ICC/IF:1:100~1:500IP:1:50

## Images



Western blot analysis of Dlx5 expression in (1) HeLa cell lysate; (2) RAW264.7 cell lysate.

## Product Description

Transcriptional factor involved in bone development. Acts as an immediate early BMP-responsive transcriptional activator essential for osteoblast differentiation. Stimulates ALPL promoter activity in a RUNX2-independent manner during osteoblast differentiation. Stimulates SP7 promoter activity during osteoblast differentiation.

---

Note: This product is for in vitro research use only and is not intended for use in humans or animals.