

EHD1 Rabbit mAb

Catalog No: #56495

Package Size: #56495-1 50ul #56495-2 100ul

Orders: order@signalwayantibody.comSupport: tech@signalwayantibody.com

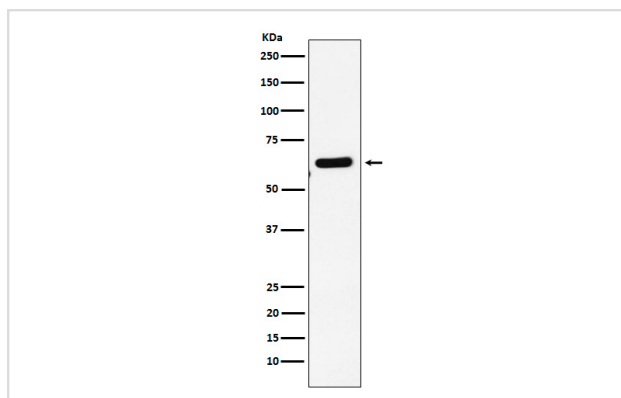
Description

Product Name	EHD1 Rabbit mAb
Host Species	Rabbit
Clonality	Monoclonal
Isotype	Rabbit IgG
Purification	Affinity-chromatography
Applications	WB IHC ICC/IF IP FC
Species Reactivity	Human Mouse Rat
Specificity	EHD1 Antibody detects endogenous levels of total EHD1
Immunogen Description	A synthesized peptide derived from human EHD1
Other Names	EHD1; H PAST; hPAST1; PAST; PAST homolog 1; PAST1; Testilin;
Accession No.	Uniprot:Q9H4M9
Calculated MW	61kDa
Formulation	Rabbit IgG in phosphate buffered saline , pH 7.4, 150mM NaCl, 0.02% sodium azide and 50% glycerol.
Storage	Store at +4°C short term. Store at -20°C long term. Avoid freeze / thaw cycle.

Application Details

WB:1:500~1:2000IHC:1:50~1:200ICC/IF:1:50~1:200IP:1:50FC:1:40

Images



Western blot analysis of EHD1 expression in HepG2 cell lysate.

Product Description

Acts in early endocytic membrane fusion and membrane trafficking of recycling endosomes.

Note: This product is for in vitro research use only and is not intended for use in humans or animals.