

## TAB1 Rabbit mAb

Catalog No: #56502

Package Size: #56502-1 50ul #56502-2 100ul

Orders: order@signalwayantibody.com

Support: tech@signalwayantibody.com

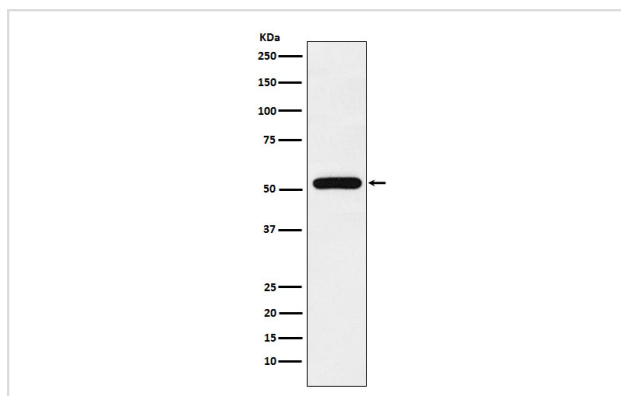
## Description

Product Name	TAB1 Rabbit mAb
Host Species	Rabbit
Clonality	Monoclonal
Isotype	Rabbit IgG
Purification	Affinity-chromatography
Applications	WB IHC ICC/IF IP FC
Species Reactivity	Human Mouse Rat
Specificity	TAB1 Antibody detects endogenous levels of total TAB1
Immunogen Description	A synthesized peptide derived from human TAB1
Other Names	MAP3K7IP1; TAB1; TAK1 binding protein 1;
Accession No.	Uniprot:Q15750
Calculated MW	55kDa
Formulation	Rabbit IgG in phosphate buffered saline , pH 7.4, 150mM NaCl, 0.02% sodium azide and 50% glycerol.
Storage	Store at +4°C short term. Store at -20°C long term. Avoid freeze / thaw cycle.

## Application Details

WB:1:500~1:2000IHC:1:50~1:200ICC/IF:1:50~1:200IP:1:40FC:1:100

## Images



Western blot analysis of TAB1 expression in MCF-7 cell lysate.

## Product Description

May be an important signaling intermediate between TGFB receptors and MAP3K7/TAK1. May play an important role in mammalian embryogenesis.

---

Note: This product is for in vitro research use only and is not intended for use in humans or animals.