

## PRMT6 Rabbit mAb

Catalog No: #56504

Package Size: #56504-1 50ul #56504-2 100ul

Orders: order@signalwayantibody.com

Support: tech@signalwayantibody.com

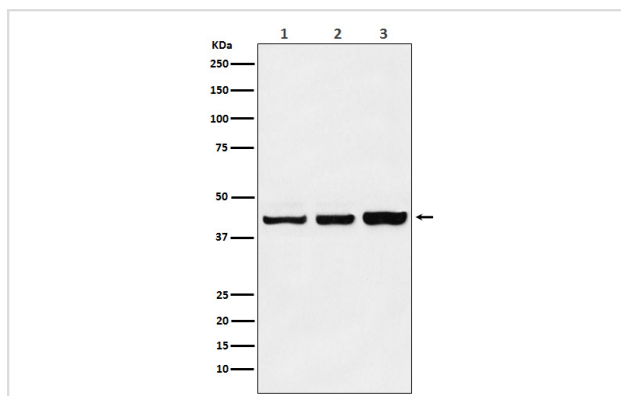
## Description

Product Name	PRMT6 Rabbit mAb
Host Species	Rabbit
Clonality	Monoclonal
Isotype	Rabbit IgG
Purification	Affinity-chromatography
Applications	WB
Species Reactivity	Human Mouse Rat
Specificity	PRMT6 Antibody detects endogenous levels of total PRMT6
Immunogen Description	A synthesized peptide derived from human PRMT6
Other Names	HRMT1L6; PRMT 6;
Accession No.	Uniprot:Q96LA8
Calculated MW	42kDa
Formulation	Rabbit IgG in phosphate buffered saline , pH 7.4, 150mM NaCl, 0.02% sodium azide and 50% glycerol.
Storage	Store at +4°C short term. Store at -20°C long term. Avoid freeze / thaw cycle.

## Application Details

WB:1:500~1:1000

## Images



Western blot analysis of PRMT6 expression in (1) Jurkat cell lysate; (2) NIH/3T3 cell lysate; (3) C6 cell lysate.

## Product Description

Arginine methyltransferase that can catalyze the formation of both omega-N monomethylarginine (MMA) and asymmetrical dimethylarginine (aDMA), with a strong preference for the formation of aDMA. Preferentially methylates arginyl residues present in a glycine and arginine-rich domain and displays preference for monomethylated substrates.

---

Note: This product is for in vitro research use only and is not intended for use in humans or animals.