

RAP1GAP Rabbit mAb

Catalog No: #56506

Package Size: #56506-1 50ul #56506-2 100ul

Orders: order@signalwayantibody.com

Support: tech@signalwayantibody.com

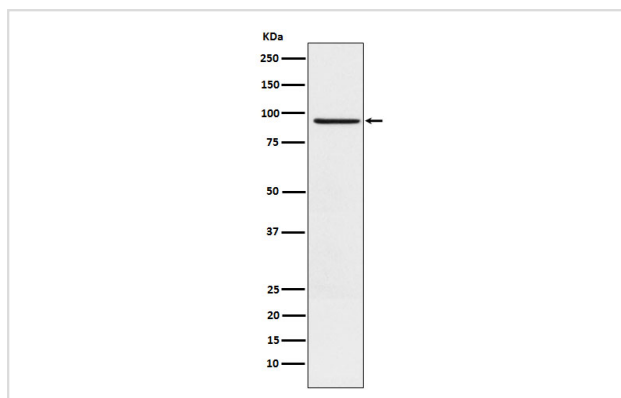
Description

Product Name	RAP1GAP Rabbit mAb
Host Species	Rabbit
Clonality	Monoclonal
Isotype	Rabbit IgG
Purification	Affinity-chromatography
Applications	WB IHC ICC/IF IP FC
Species Reactivity	Human Mouse Rat
Specificity	RAP1GAP Antibody detects endogenous levels of total RAP1GAP
Immunogen Description	A synthesized peptide derived from human RAP1GAP
Other Names	RAP1GA1; Rap1GAP; Rap1GAP1; RAP1GAPII; RAPGAP;
Accession No.	Uniprot:P47736
Calculated MW	95kDa
Formulation	Rabbit IgG in phosphate buffered saline , pH 7.4, 150mM NaCl, 0.02% sodium azide and 50% glycerol.
Storage	Store at +4°C short term. Store at -20°C long term. Avoid freeze / thaw cycle.

Application Details

WB:1:1000~1:5000IHC:1:100~1:500ICC/IF:1:50~1:200IP:1:50FC:1:50

Images



Western blot analysis of RAP1GAP expression in SH-SY5Y cell lysate.

Product Description

GTPase activator for the nuclear Ras-related regulatory protein RAP-1A (KREV-1), converting it to the putatively inactive GDP-bound state.

Note: This product is for in vitro research use only and is not intended for use in humans or animals.