

## Intra Acrosomal Protein Rabbit mAb

Catalog No: #56518



Package Size: #56518-1 50ul #56518-2 100ul

Orders: [order@signalwayantibody.com](mailto:order@signalwayantibody.com)Support: [tech@signalwayantibody.com](mailto:tech@signalwayantibody.com)

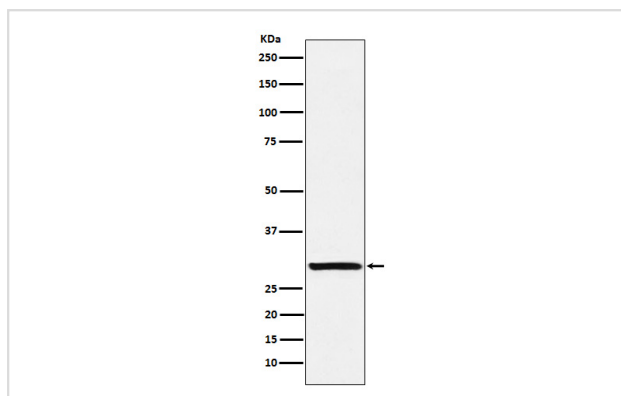
## Description

Product Name	Intra Acrosomal Protein Rabbit mAb
Host Species	Rabbit
Clonality	Monoclonal
Isotype	Rabbit IgG
Purification	Affinity-chromatography
Applications	WB
Species Reactivity	Human
Specificity	Intra Acrosomal Protein Antibody detects endogenous levels of total Intra Acrosomal Protein
Immunogen Description	A synthesized peptide derived from human Intra Acrosomal Protein
Other Names	ACRV1; Msa63; Sp10; SPACA2;
Accession No.	Uniprot:P26436
Calculated MW	14-36kDa
Formulation	Rabbit IgG in phosphate buffered saline , pH 7.4, 150mM NaCl, 0.02% sodium azide and 50% glycerol.
Storage	Store at +4°C short term. Store at -20°C long term. Avoid freeze / thaw cycle.

## Application Details

WB: 1:500~1:2000

## Images



Western blot analysis of Intra Acrosomal Protein expression in Human testis lysate.

## Product Description

N/A

---

Note: This product is for in vitro research use only and is not intended for use in humans or animals.