

## TC10 Rabbit mAb

Catalog No: #56523

Package Size: #56523-1 50ul #56523-2 100ul

Orders: [order@signalwayantibody.com](mailto:order@signalwayantibody.com)Support: [tech@signalwayantibody.com](mailto:tech@signalwayantibody.com)

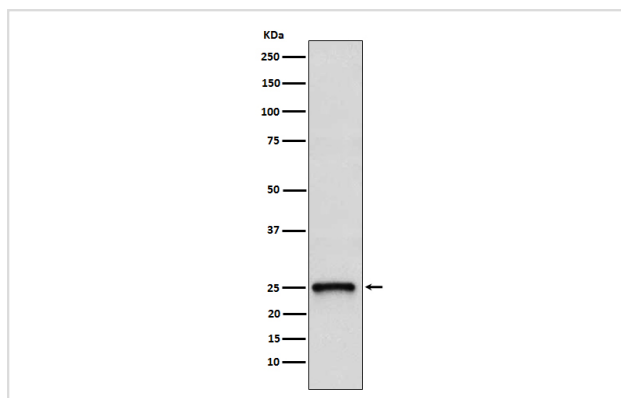
## Description

Product Name	TC10 Rabbit mAb
Host Species	Rabbit
Clonality	Monoclonal
Isotype	Rabbit IgG
Purification	Affinity-chromatography
Applications	WB ICC/IF
Species Reactivity	Human Rat
Specificity	TC10 Antibody detects endogenous levels of total TC10
Immunogen Description	A synthesized peptide derived from human TC10
Other Names	ARHQ; RASL7A; Rho related GTP binding protein RhoQ; Rhoq; TC10A;
Accession No.	Uniprot:P17081
Calculated MW	25 kDa
Formulation	Rabbit IgG in phosphate buffered saline , pH 7.4, 150mM NaCl, 0.02% sodium azide and 50% glycerol.
Storage	Store at +4°C short term. Store at -20°C long term. Avoid freeze / thaw cycle.

## Application Details

WB:1:500~1:2000 ICC/IF:1:50~1:200

## Images



Western blot analysis of TC10 expression in 293T cell lysate.

## Product Description

Plasma membrane-associated small GTPase which cycles between an active GTP-bound and an inactive GDP-bound state. In active state binds to a variety of effector proteins to regulate cellular responses. Involved in epithelial cell polarization processes.

---

Note: This product is for in vitro research use only and is not intended for use in humans or animals.