

## GSTK1 Rabbit mAb

Catalog No: #56526

Package Size: #56526-1 50ul #56526-2 100ul

Orders: order@signalwayantibody.com

Support: tech@signalwayantibody.com

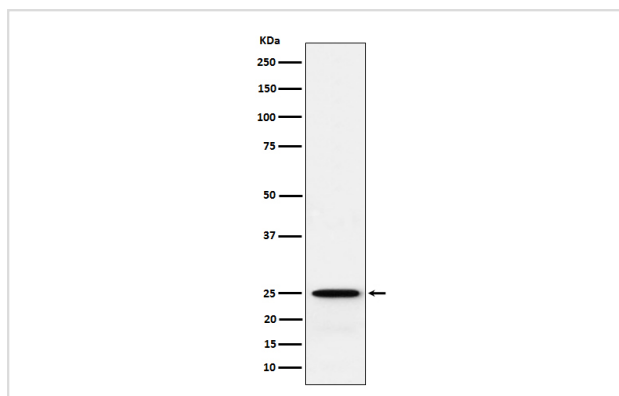
## Description

|                       |  |
|-----------------------|--|
| Product Name          | GSTK1 Rabbit mAb   |
| Host Species          | Rabbit   |
| Clonality             | Monoclonal   |
| Isotype               | Rabbit IgG   |
| Purification          | Affinity-chromatography  |
| Applications          | WB IHC ICC/IF IP FC  |
| Species Reactivity    | Human  |
| Specificity           | GSTK1 Antibody detects endogenous levels of total GSTK1  |
| Immunogen Description | A synthesized peptide derived from human GSTK1   |
| Other Names           | GST; GST class kappa; GST13; Gstk1; hGSTK1;  |
| Accession No.         | Uniprot:Q9Y2Q3   |
| Calculated MW         | 25 kDa   |
| Formulation           | Rabbit IgG in phosphate buffered saline , pH 7.4, 150mM NaCl, 0.02% sodium azide and 50% glycerol. |
| Storage               | Store at +4°C short term. Store at -20°C long term. Avoid freeze / thaw cycle.                     |

## Application Details

WB:1:500~1:2000IHC:1:50~1:200ICC/IF:1:50~1:200IP:1:50FC:1:50

## Images



Western blot analysis of GSTK1 expression in 293T cell lysate.

## Product Description

Significant glutathione conjugating activity is found only with the model substrate, 1-chloro-2,4-dinitrobenzene (CDNB).

---

Note: This product is for in vitro research use only and is not intended for use in humans or animals.