

## GTPBP4 Rabbit mAb

Catalog No: #56527

Package Size: #56527-1 50ul #56527-2 100ul

Orders: [order@signalwayantibody.com](mailto:order@signalwayantibody.com)Support: [tech@signalwayantibody.com](mailto:tech@signalwayantibody.com)

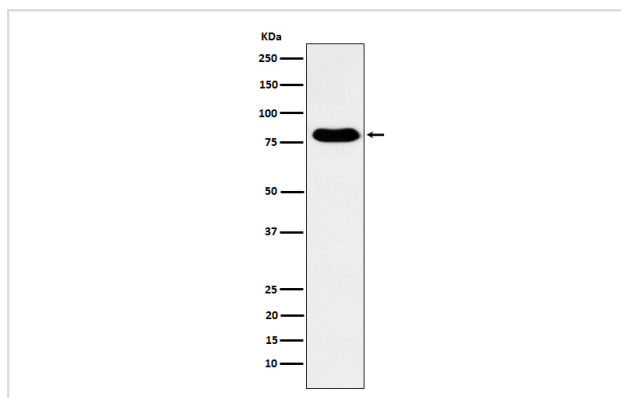
## Description

Product Name	GTPBP4 Rabbit mAb
Host Species	Rabbit
Clonality	Monoclonal
Isotype	Rabbit IgG
Purification	Affinity-chromatography
Applications	WB IHC IP FC
Species Reactivity	Human
Specificity	GTPBP4 Antibody detects endogenous levels of total GTPBP4
Immunogen Description	A synthesized peptide derived from human GTPBP4
Other Names	CRFG; GTP binding protein 4; Gtpbp4; NGB; NOG1;
Accession No.	Uniprot:Q9BZE4
Calculated MW	80 kDa
Formulation	Rabbit IgG in phosphate buffered saline , pH 7.4, 150mM NaCl, 0.02% sodium azide and 50% glycerol.
Storage	Store at +4°C short term. Store at -20°C long term. Avoid freeze / thaw cycle.

## Application Details

WB:1:500~1:2000IHC:1:50~1:200IP:1:50FC:1:50

## Images



Western blot analysis of GTPBP4 expression in Human fetal kidney lysate.

## Product Description

Involved in the biogenesis of the 60S ribosomal subunit.

---

Note: This product is for in vitro research use only and is not intended for use in humans or animals.