

## CEND1 Rabbit mAb

Catalog No: #56540

Package Size: #56540-1 50ul #56540-2 100ul

Orders: order@signalwayantibody.com

Support: tech@signalwayantibody.com

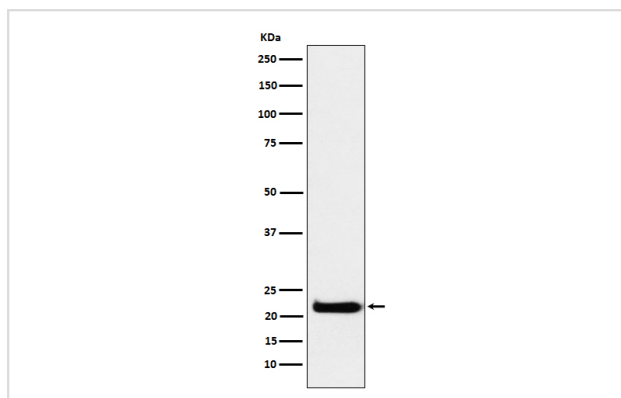
## Description

Product Name	CEND1 Rabbit mAb
Host Species	Rabbit
Clonality	Monoclonal
Isotype	Rabbit IgG
Purification	Affinity-chromatography
Applications	WB IHC ICC IP
Species Reactivity	Human Mouse Rat
Specificity	CEND1 Antibody detects endogenous levels of total CEND1
Immunogen Description	A synthesized peptide derived from human CEND1
Other Names	BM88;
Accession No.	Uniprot:Q8N111
Calculated MW	22kDa
Formulation	Rabbit IgG in phosphate buffered saline , pH 7.4, 150mM NaCl, 0.02% sodium azide and 50% glycerol.
Storage	Store at +4°C short term. Store at -20°C long term. Avoid freeze / thaw cycle.

## Application Details

WB:1:500~1:2000IHC:1:50~1:200ICC/IF:1:50~1:200IP:1:50

## Images



Western blot analysis of CEND1 expression in U-87 MG cell lysate.

## Product Description

CEND1 is a neuron-specific protein. The similar protein in pig enhances neuroblastoma cell differentiation in vitro and may be involved in neuronal differentiation in vivo. Multiple pseudogenes have been reported for this gene

---

Note: This product is for in vitro research use only and is not intended for use in humans or animals.