

## MBD2 Rabbit mAb

Catalog No: #56553

Package Size: #56553-1 50ul #56553-2 100ul

Orders: [order@signalwayantibody.com](mailto:order@signalwayantibody.com)Support: [tech@signalwayantibody.com](mailto:tech@signalwayantibody.com)

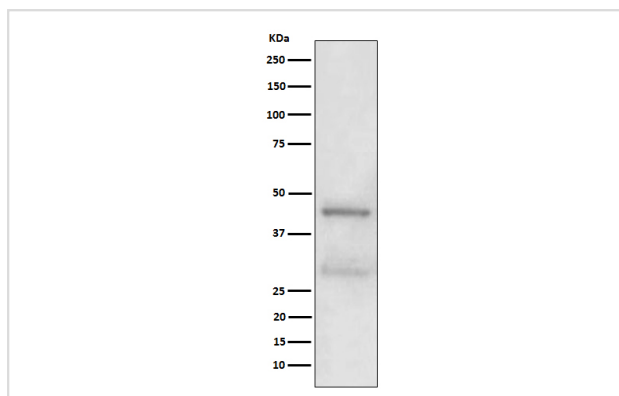
## Description

|                       |  |
|-----------------------|--|
| Product Name          | MBD2 Rabbit mAb  |
| Host Species          | Rabbit   |
| Clonality             | Monoclonal   |
| Isotype               | Rabbit IgG   |
| Purification          | Affinity-chromatography  |
| Applications          | WB IHC ICC/IF  |
| Species Reactivity    | Human  |
| Specificity           | MBD2 Antibody detects endogenous levels of total MBD2  |
| Immunogen Description | A synthesized peptide derived from human MBD2  |
| Other Names           | Demethylase; DMTase; Mbd2; MBD2a;  |
| Accession No.         | Uniprot:Q9UBB5   |
| Calculated MW         | 43/32/29KDa  |
| Formulation           | Rabbit IgG in phosphate buffered saline , pH 7.4, 150mM NaCl, 0.02% sodium azide and 50% glycerol. |
| Storage               | Store at +4°C short term. Store at -20°C long term. Avoid freeze / thaw cycle.                     |

## Application Details

WB:1:500~1:2000IHC:1:50~1:200ICC/IF:1:50~1:200

## Images



Western blot analysis of MBD2 expression in A431 cell lysate.

## Product Description

Binds CpG islands in promoters where the DNA is methylated at position 5 of cytosine within CpG dinucleotides. Binds hemimethylated DNA as well. Recruits histone deacetylases and DNA methyltransferases. Acts as transcriptional repressor and plays a role in gene silencing.

---

Note: This product is for in vitro research use only and is not intended for use in humans or animals.