

## Tin2 Rabbit mAb

Catalog No: #56558

Package Size: #56558-1 50ul #56558-2 100ul

Orders: order@signalwayantibody.com

Support: tech@signalwayantibody.com

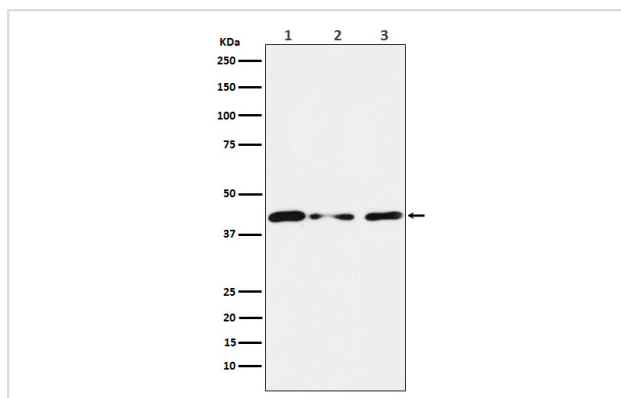
## Description

Product Name	Tin2 Rabbit mAb
Host Species	Rabbit
Clonality	Monoclonal
Isotype	Rabbit IgG
Purification	Affinity-chromatography
Applications	WB
Species Reactivity	Human Mouse Rat
Specificity	Tin2 Antibody detects endogenous levels of total Tin2
Immunogen Description	A synthesized peptide derived from human Tin2
Other Names	DKCA3; Tin 2; TIN2; TIN2; Tinf2;
Accession No.	Uniprot:Q9BSI4
Calculated MW	40kDa
Formulation	Rabbit IgG in phosphate buffered saline , pH 7.4, 150mM NaCl, 0.02% sodium azide and 50% glycerol.
Storage	Store at +4°C short term. Store at -20°C long term. Avoid freeze / thaw cycle.

## Application Details

WB:1:500~1:1000

## Images



Western blot analysis of Tin2 expression in (1) HUVEC cell lysate; (2) NIH/3T3 cell lysate; (3) PC12 cell lysate.

## Product Description

Component of the shelterin complex (telosome) that is involved in the regulation of telomere length and protection. Shelterin associates with arrays of double-stranded TTAGGG repeats added by telomerase and protects chromosome ends; without its protective activity, telomeres are no longer hidden from the DNA damage surveillance and chromosome ends are inappropriately processed by DNA repair pathways. Plays a role in shelterin complex assembly.

---

Note: This product is for in vitro research use only and is not intended for use in humans or animals.