

RNase L Rabbit mAb

Catalog No: #56561



Package Size: #56561-1 50ul #56561-2 100ul

Orders: order@signalwayantibody.com

Support: tech@signalwayantibody.com

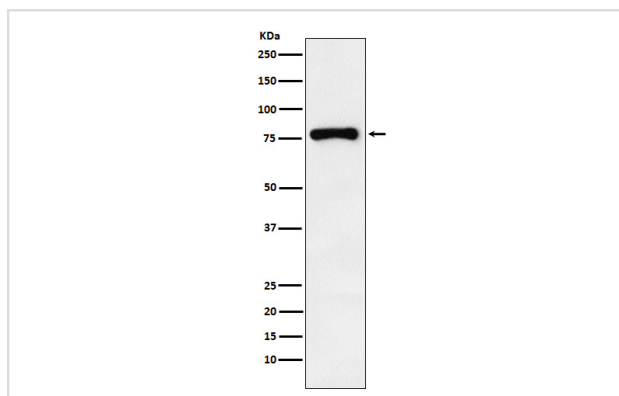
Description

Product Name	RNase L Rabbit mAb
Host Species	Rabbit
Clonality	Monoclonal
Isotype	Rabbit IgG
Purification	Affinity-chromatography
Applications	WB
Species Reactivity	Human
Specificity	RNase L Antibody detects endogenous levels of total RNase L
Immunogen Description	A synthesized peptide derived from human RNase L
Other Names	PRCA1; Ribonuclease4; RibonucleaseL; RNase L; Rnasel; RNS4;
Accession No.	Uniprot:Q05823
Calculated MW	80kDa
Formulation	Rabbit IgG in phosphate buffered saline , pH 7.4, 150mM NaCl, 0.02% sodium azide and 50% glycerol.
Storage	Store at +4°C short term. Store at -20°C long term. Avoid freeze / thaw cycle.

Application Details

WB: 1:500~1:2000

Images



Western blot analysis of RNase L expression in THP1 cell lysate.

Product Description

Endoribonuclease that functions in the interferon (IFN) antiviral response. In INF treated and virus infected cells, RNASEL probably mediates its antiviral effects through a combination of direct cleavage of single-stranded viral RNAs, inhibition of protein synthesis through the degradation of rRNA, induction of apoptosis, and induction of other antiviral genes.

Note: This product is for in vitro research use only and is not intended for use in humans or animals.