

## Epac2 Rabbit mAb

Catalog No: #56564

Package Size: #56564-1 50ul #56564-2 100ul

Orders: [order@signalwayantibody.com](mailto:order@signalwayantibody.com)Support: [tech@signalwayantibody.com](mailto:tech@signalwayantibody.com)

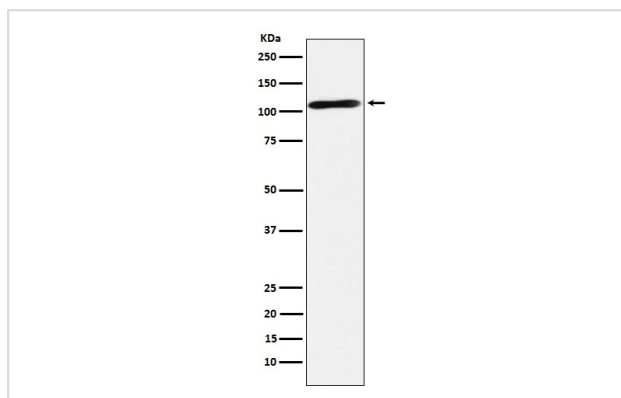
## Description

Product Name	Epac2 Rabbit mAb
Host Species	Rabbit
Clonality	Monoclonal
Isotype	Rabbit IgG
Purification	Affinity-chromatography
Applications	WB
Species Reactivity	Human Mouse Rat
Specificity	Epac2 Antibody detects endogenous levels of total Epac2
Immunogen Description	A synthesized peptide derived from human Epac2
Other Names	CAMP GEFII; CAMPGEFII; CGEF2; EPAC2; Rapgef4;
Accession No.	Uniprot:Q8WZA2
Calculated MW	116kDa
Formulation	Rabbit IgG in phosphate buffered saline , pH 7.4, 150mM NaCl, 0.02% sodium azide and 50% glycerol.
Storage	Store at +4°C short term. Store at -20°C long term. Avoid freeze / thaw cycle.

## Application Details

WB: 1:500~1:2000

## Images



Western blot analysis of Epac2 expression in Human fetal brain lysate.

## Product Description

Guanine nucleotide exchange factor (GEF) for RAP1A, RAP1B and RAP2A small GTPases that is activated by binding cAMP. Seems not to activate RAB3A. Involved in cAMP-dependent, PKA-independent exocytosis through interaction with RIMS2.

---

Note: This product is for in vitro research use only and is not intended for use in humans or animals.