

## TEAD1/2/3/4 Rabbit mAb

Catalog No: #56565

Package Size: #56565-1 50ul #56565-2 100ul

Orders: [order@signalwayantibody.com](mailto:order@signalwayantibody.com)Support: [tech@signalwayantibody.com](mailto:tech@signalwayantibody.com)

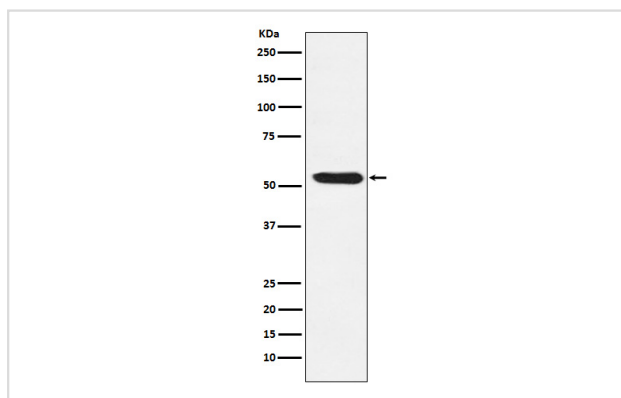
## Description

Product Name	TEAD1/2/3/4 Rabbit mAb
Host Species	Rabbit
Clonality	Monoclonal
Isotype	Rabbit IgG
Purification	Affinity-chromatography
Applications	WB
Species Reactivity	Human
Specificity	TEAD1 + TEAD2 + TEAD3 + TEAD4 Antibody detects endogenous levels of total TEAD1 + TEAD2 + TEAD3 + TEAD4
Immunogen Description	A synthesized peptide derived from human TEAD1 + TEAD2 + TEAD3 + TEAD4
Other Names	DTEF 1; NTEF 1; TCF13; TEAD1; TEAD2; TEAD3; TEAD4; TEAD5; TEF1; TEF4; TEF5;
Accession No.	Uniprot:P28347/Q15561/Q15562/Q99594
Calculated MW	54kDa
Formulation	Rabbit IgG in phosphate buffered saline , pH 7.4, 150mM NaCl, 0.02% sodium azide and 50% glycerol.
Storage	Store at +4°C short term. Store at -20°C long term. Avoid freeze / thaw cycle.

## Application Details

WB: 1:500~1:1000

## Images



Western blot analysis of TEAD1/2/3/4 expression in SW480 cell lysate.

## Product Description

Transcription factor which plays a key role in the Hippo signaling pathway, a pathway involved in organ size control and tumor suppression by restricting proliferation and promoting apoptosis.

---

Note: This product is for in vitro research use only and is not intended for use in humans or animals.