

## PSMA3 Rabbit mAb

Catalog No: #56578

Package Size: #56578-1 50ul #56578-2 100ul

Orders: [order@signalwayantibody.com](mailto:order@signalwayantibody.com)Support: [tech@signalwayantibody.com](mailto:tech@signalwayantibody.com)

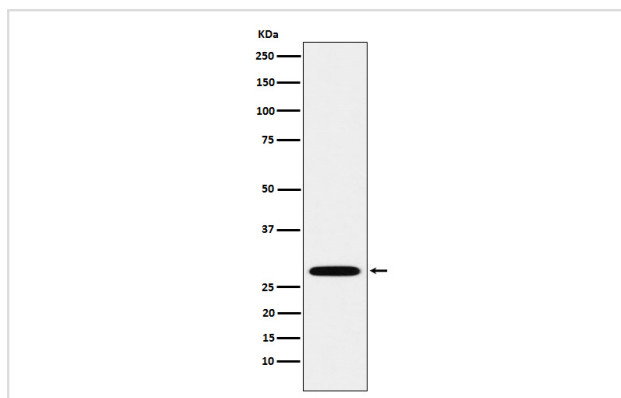
## Description

Product Name	PSMA3 Rabbit mAb
Host Species	Rabbit
Clonality	Monoclonal
Isotype	Rabbit IgG
Purification	Affinity-chromatography
Applications	WB IHC ICC/IF IP
Species Reactivity	Human Mouse Rat
Specificity	PSMA3 Antibody detects endogenous levels of total PSMA3
Immunogen Description	A synthesized peptide derived from human PSMA3
Other Names	HC8; Proteasome component C8; PSC8; psmA3;
Accession No.	Uniprot:P25788
Calculated MW	28kDa
Formulation	Rabbit IgG in phosphate buffered saline , pH 7.4, 150mM NaCl, 0.02% sodium azide and 50% glycerol.
Storage	Store at +4°C short term. Store at -20°C long term. Avoid freeze / thaw cycle.

## Application Details

WB:1:500~1:2000IHC:1:50~1:200ICC/IF:1:50~1:200IP:1:50

## Images



Western blot analysis of PSMA3 expression in A549 cell lysate.

## Product Description

The proteasome is a multicatalytic proteinase complex which is characterized by its ability to cleave peptides with Arg, Phe, Tyr, Leu, and Glu adjacent to the leaving group at neutral or slightly basic pH.

---

Note: This product is for in vitro research use only and is not intended for use in humans or animals.