

TAB3 Rabbit mAb

Catalog No: #56584

Package Size: #56584-1 50ul #56584-2 100ul

Orders: order@signalwayantibody.com

Support: tech@signalwayantibody.com

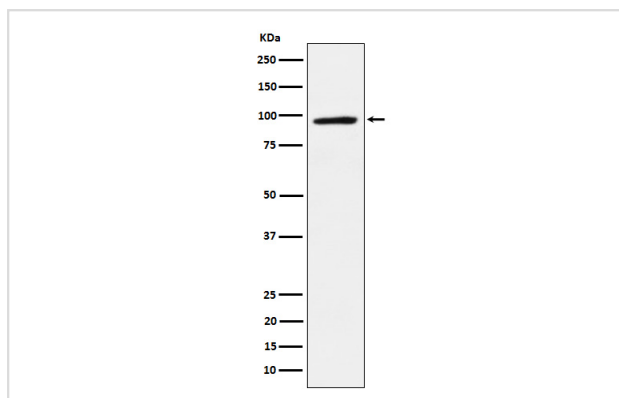
Description

Product Name	TAB3 Rabbit mAb
Host Species	Rabbit
Clonality	Monoclonal
Isotype	Rabbit IgG
Purification	Affinity-chromatography
Applications	WB ICC/IF
Species Reactivity	Human Mouse
Specificity	TAB3 antibody detects endogenous levels of total TAB3
Immunogen Description	A synthesized peptide derived from human TAB3
Other Names	MAP3K7IP 3; NAP1; NFkB activating protein 1; Tab3; TAK1 binding protein 3;
Accession No.	Uniprot:Q8N5C8
Calculated MW	90kDa
Formulation	Rabbit IgG in phosphate buffered saline , pH 7.4, 150mM NaCl, 0.02% sodium azide and 50% glycerol.
Storage	Store at +4°C short term. Store at -20°C long term. Avoid freeze / thaw cycle.

Application Details

WB:1:500~1:2000CC/IF1:50~1:200

Images



Western blot analysis of TAB3 expression in HepG2 cell lysate.

Product Description

Adapter linking MAP3K7/TAK1 and TRAF6 or TRAF2. Mediator of MAP3K7 activation, respectively in the IL1 and TNF signaling pathways. Plays a role in activation of NF-kappa-B and AP1 transcription factor. Isoform 2 may be an oncogenic factor.

Note: This product is for in vitro research use only and is not intended for use in humans or animals.