

## Aly Rabbit mAb

Catalog No: #56585

Package Size: #56585-1 50ul #56585-2 100ul

Orders: order@signalwayantibody.com

Support: tech@signalwayantibody.com

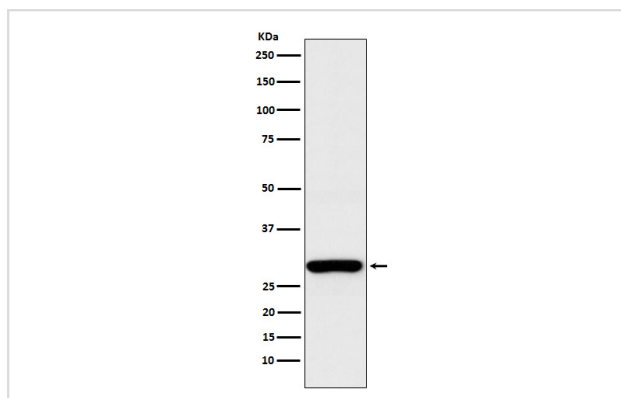
## Description

Product Name	Aly Rabbit mAb
Host Species	Rabbit
Clonality	Monoclonal
Isotype	Rabbit IgG
Purification	Affinity-chromatography
Applications	WB IHC ICC/IF IP FC
Species Reactivity	Human Mouse Rat
Specificity	Aly Antibody detects endogenous levels of total Aly
Immunogen Description	A synthesized peptide derived from human Aly
Other Names	ALY; ALY/REF; BEF; REF; Tho4; thoc4;
Accession No.	Uniprot:Q86V81
Calculated MW	27kDa
Formulation	Rabbit IgG in phosphate buffered saline , pH 7.4, 150mM NaCl, 0.02% sodium azide and 50% glycerol.
Storage	Store at +4°C short term. Store at -20°C long term. Avoid freeze / thaw cycle.

## Application Details

WB:1:500~1:2000IHC:1:50~1:200ICC/IF:1:50~1:200IP:1:40FC:1:100

## Images



Western blot analysis of Aly expression in HEK293 cell lysate.

## Product Description

Component of the THO subcomplex of the TREX complex. The TREX complex specifically associates with spliced mRNA and not with unspliced pre-mRNA. It is recruited to spliced mRNAs by a transcription-independent mechanism. Binds to mRNA upstream of the exon-junction complex (EJC) and is recruited in a splicing- and cap-dependent manner to a region near the 5' end of the mRNA where it functions in mRNA export.

---

Note: This product is for in vitro research use only and is not intended for use in humans or animals.