

## TOMM22/TOM22 Rabbit mAb

Catalog No: #56595

Package Size: #56595-1 50ul #56595-2 100ul

Orders: order@signalwayantibody.com

Support: tech@signalwayantibody.com

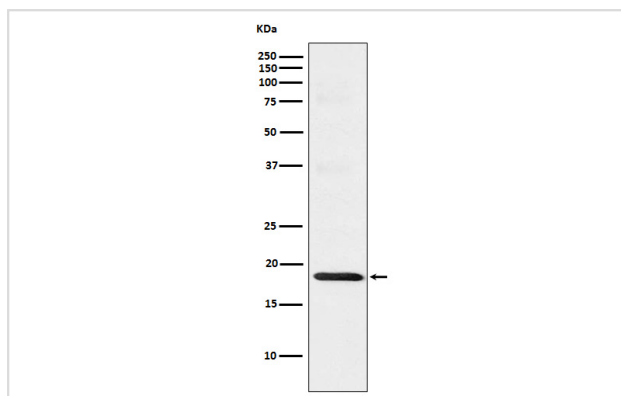
## Description

Product Name	TOMM22/TOM22 Rabbit mAb
Host Species	Rabbit
Clonality	Monoclonal
Isotype	Rabbit IgG
Purification	Affinity-chromatography
Applications	WB IHC ICC/IF IP FC
Species Reactivity	Human
Specificity	TOMM22 Antibody detects endogenous levels of total TOMM22
Immunogen Description	A synthesized peptide derived from human TOMM22
Other Names	1C9 2; hTom 22; hTom22; MST065; MSTP 065; MSTP065; TOM 22; TOM22; TOMM 22;
Accession No.	Uniprot:Q9NS69
Calculated MW	18kDa
Formulation	Rabbit IgG in phosphate buffered saline , pH 7.4, 150mM NaCl, 0.02% sodium azide and 50% glycerol.
Storage	Store at +4°C short term. Store at -20°C long term. Avoid freeze / thaw cycle.

## Application Details

WB:1:500~1:2000IHC:1:50~1:200ICC/IF:1:50~1:200IP:1:50FC:1:50

## Images



Western blot analysis of TOMM22/TOM22 expression in HeLa cell lysate.

## Product Description

Central receptor component of the translocase of the outer membrane of mitochondria (TOM complex) responsible for the recognition and translocation of cytosolically synthesized mitochondrial preproteins. Together with the peripheral receptor TOM20 functions as the transit peptide receptor and facilitates the movement of preproteins into the translocation pore.

---

Note: This product is for in vitro research use only and is not intended for use in humans or animals.