

MRC2/ENDO180 Rabbit mAb

Catalog No: #56598

Package Size: #56598-1 50ul #56598-2 100ul

Orders: order@signalwayantibody.comSupport: tech@signalwayantibody.com

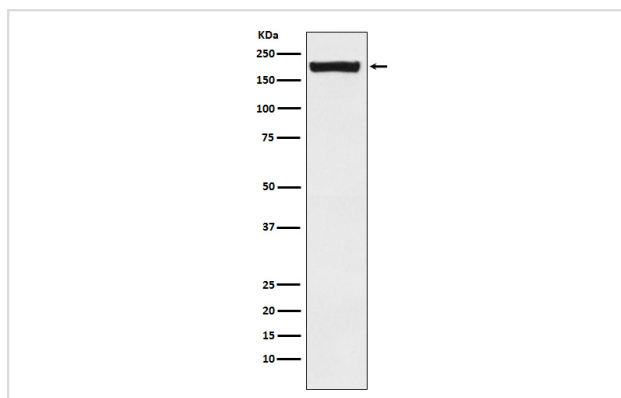
Description

Product Name	MRC2/ENDO180 Rabbit mAb
Host Species	Rabbit
Clonality	Monoclonal
Isotype	Rabbit IgG
Purification	Affinity-chromatography
Applications	WB
Species Reactivity	Human
Specificity	MRC2 Antibody detects endogenous levels of total MRC2
Immunogen Description	A synthesized peptide derived from human MRC2
Other Names	CD280 antigen; MRC2; ENDO180; KIAA0709; UPARAP;
Accession No.	Uniprot:Q9UBG0
Calculated MW	190kDa
Formulation	Rabbit IgG in phosphate buffered saline , pH 7.4, 150mM NaCl, 0.02% sodium azide and 50% glycerol.
Storage	Store at +4°C short term. Store at -20°C long term. Avoid freeze / thaw cycle.

Application Details

WB: 1:500~1:2000

Images



Western blot analysis of MRC2/ENDO180 expression in Saos2 cell lysate.

Product Description

May play a role as endocytotic lectin receptor displaying calcium-dependent lectin activity. Internalizes glycosylated ligands from the extracellular space for release in an endosomal compartment via clathrin-mediated endocytosis.

Note: This product is for in vitro research use only and is not intended for use in humans or animals.