

ROR beta Rabbit mAb

Catalog No: #56601

Package Size: #56601-1 50ul #56601-2 100ul

Orders: order@signalwayantibody.comSupport: tech@signalwayantibody.com

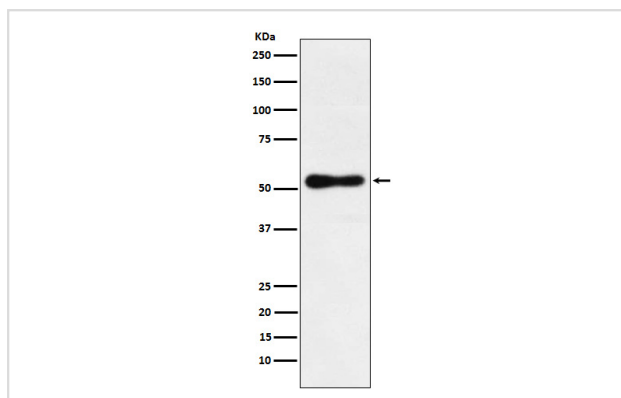
Description

| | |
|-----------------------|--|
| Product Name | ROR beta Rabbit mAb |
| Host Species | Rabbit |
| Clonality | Monoclonal |
| Isotype | Rabbit IgG |
| Purification | Affinity-chromatography |
| Applications | WB |
| Species Reactivity | Human Mouse |
| Specificity | ROR beta Antibody detects endogenous levels of total ROR beta |
| Immunogen Description | A synthesized peptide derived from human ROR beta |
| Other Names | NR1F2; ROR BETA; Rorb; RZR BETA; RZRB; |
| Accession No. | Uniprot:Q92753 |
| Calculated MW | 53kDa |
| Formulation | Rabbit IgG in phosphate buffered saline , pH 7.4, 150mM NaCl, 0.02% sodium azide and 50% glycerol. |
| Storage | Store at +4°C short term. Store at -20°C long term. Avoid freeze / thaw cycle. |

Application Details

WB: 1:500~1:2000

Images



Western blot analysis of ROR beta expression in HepG2 cell lysate.

Product Description

Orphan nuclear receptor required for normal postnatal development of rod and cone photoreceptor cells. Regulates transcription of OPN1SW in cone photoreceptor cells by binding the sequence 5'-AGGTCA-3' in the OPN1SW promoter.

Note: This product is for in vitro research use only and is not intended for use in humans or animals.