

Casein Rabbit mAb

Catalog No: #56603

Package Size: #56603-1 50ul #56603-2 100ul

Orders: order@signalwayantibody.com

Support: tech@signalwayantibody.com

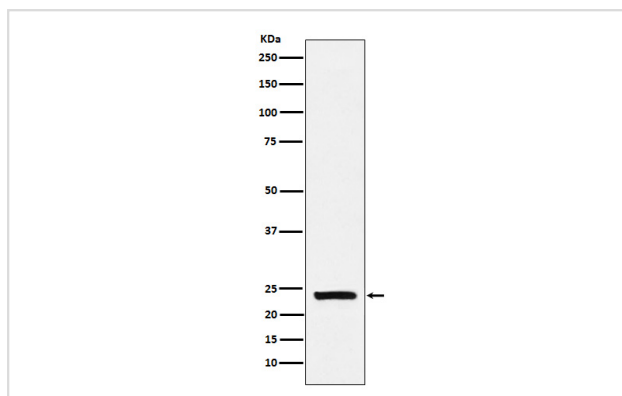
Description

| | |
|-----------------------|--|
| Product Name | Casein Rabbit mAb |
| Host Species | Rabbit |
| Clonality | Monoclonal |
| Isotype | Rabbit IgG |
| Purification | Affinity-chromatography |
| Applications | WB IP |
| Species Reactivity | Human |
| Specificity | Casein Antibody detects endogenous levels of total Casein |
| Immunogen Description | A synthesized peptide derived from human Casein |
| Other Names | Casein; |
| Accession No. | Uniprot:P47710 |
| Calculated MW | 22kDa |
| Formulation | Rabbit IgG in phosphate buffered saline , pH 7.4, 150mM NaCl, 0.02% sodium azide and 50% glycerol. |
| Storage | Store at +4°C short term. Store at -20°C long term. Avoid freeze / thaw cycle. |

Application Details

WB:1:1000~1:5000IP:1:50

Images



Western blot analysis of Casein expression in Human milk lysate.

Product Description

Important role in the capacity of milk to transport calcium phosphate.

Note: This product is for in vitro research use only and is not intended for use in humans or animals.