

## DISC1 Rabbit mAb

Catalog No: #56611

Package Size: #56611-1 50ul #56611-2 100ul

Orders: [order@signalwayantibody.com](mailto:order@signalwayantibody.com)Support: [tech@signalwayantibody.com](mailto:tech@signalwayantibody.com)

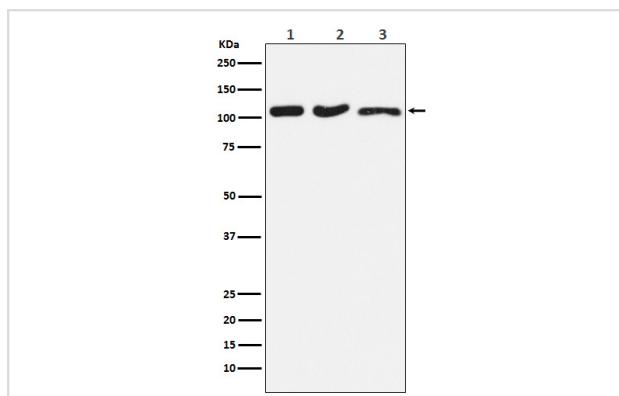
## Description

Product Name	DISC1 Rabbit mAb
Host Species	Rabbit
Clonality	Monoclonal
Isotype	Rabbit IgG
Purification	Affinity-chromatography
Applications	WB IHC ICC/IF IP FC
Species Reactivity	Human Mouse Rat
Specificity	DISC1 Antibody detects endogenous levels of total DISC1
Immunogen Description	A synthesized peptide derived from human DISC1
Other Names	C1orf136; DISC1; KIAA0457; RP4-730B13.1; SCZD9;
Accession No.	Uniprot:Q9NRI5
Calculated MW	100kDa
Formulation	Rabbit IgG in phosphate buffered saline , pH 7.4, 150mM NaCl, 0.02% sodium azide and 50% glycerol.
Storage	Store at +4°C short term. Store at -20°C long term. Avoid freeze / thaw cycle.

## Application Details

WB:1:500~1:2000IHC:1:50~1:200ICC/IF:1:50~1:200IP:1:50

## Images



Western blot analysis of DISC1 expression in (1) HeLa cell lysate; (2) RAW264.7 cell lysate; (3) PC-12 cell lysate.

## Product Description

Involved in the regulation of multiple aspects of embryonic and adult neurogenesis. Required for neural progenitor proliferation in the ventricular/subventricular zone during embryonic brain development and in the adult dentate gyrus of the hippocampus.

---

Note: This product is for in vitro research use only and is not intended for use in humans or animals.