

VPS11 Rabbit mAb

Catalog No: #56615

Package Size: #56615-1 50ul #56615-2 100ul

Orders: order@signalwayantibody.comSupport: tech@signalwayantibody.com

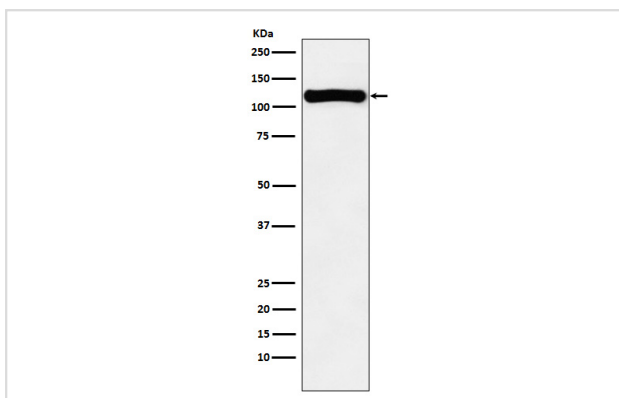
Description

Product Name	VPS11 Rabbit mAb
Host Species	Rabbit
Clonality	Monoclonal
Isotype	Rabbit IgG
Purification	Affinity-chromatography
Applications	WB IHC FC
Species Reactivity	Human Mouse
Specificity	VPS11 Antibody detects endogenous levels of total VPS11
Immunogen Description	A synthesized peptide derived from human VPS11
Other Names	END1; hVPS11; PEP5; PP3476; RNF108; vps11;
Accession No.	Uniprot:Q9H270
Calculated MW	108kDa
Formulation	Rabbit IgG in phosphate buffered saline , pH 7.4, 150mM NaCl, 0.02% sodium azide and 50% glycerol.
Storage	Store at +4°C short term. Store at -20°C long term. Avoid freeze / thaw cycle.

Application Details

WB:1:500~1:2000IHC:1:50~1:200FC:1:80

Images



Western blot analysis of VPS11 expression in K562 cell lysate.

Product Description

May play a role in vesicle-mediated protein trafficking to lysosomal compartments and in membrane docking/fusion reactions of late endosomes/lysosomes.

Note: This product is for in vitro research use only and is not intended for use in humans or animals.