

## Cystathionase Rabbit mAb

Catalog No: #56624

Package Size: #56624-1 50ul #56624-2 100ul

Orders: [order@signalwayantibody.com](mailto:order@signalwayantibody.com)Support: [tech@signalwayantibody.com](mailto:tech@signalwayantibody.com)

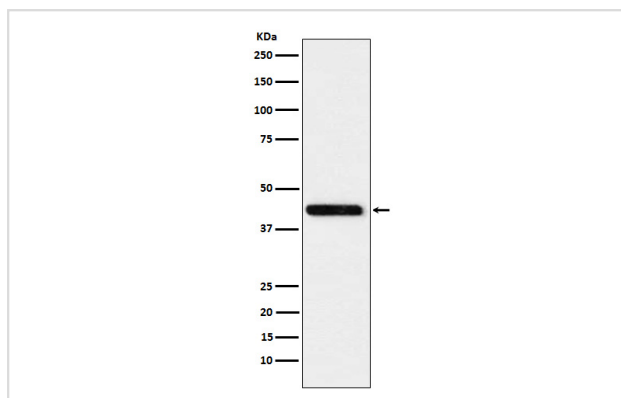
## Description

Product Name	Cystathionase Rabbit mAb
Host Species	Rabbit
Clonality	Monoclonal
Isotype	Rabbit IgG
Purification	Affinity-chromatography
Applications	WB IP
Species Reactivity	Human
Specificity	Cystathionase Antibody detects endogenous levels of total Cystathionase
Immunogen Description	A synthesized peptide derived from human Cystathionase
Other Names	CTH; Cystathionine gamma lyase; Cysteine desulfhydrase; Gamma cystathionase; Homoserine deaminase;
Accession No.	Uniprot:P32929
Calculated MW	42kDa
Formulation	Rabbit IgG in phosphate buffered saline , pH 7.4, 150mM NaCl, 0.02% sodium azide and 50% glycerol.
Storage	Store at +4°C short term. Store at -20°C long term. Avoid freeze / thaw cycle.

## Application Details

WB:1:1000~1:5000IP:1:50

## Images



Western blot analysis of Cystathionase expression in HeLa cell lysate.

## Product Description

Catalyzes the last step in the transsulfuration pathway from methionine to cysteine. Has broad substrate specificity. Converts cystathionine to cysteine, ammonia and 2-oxobutanoate.

---

Note: This product is for in vitro research use only and is not intended for use in humans or animals.