

MYL9 Rabbit mAb

Catalog No: #56625

Package Size: #56625-1 50ul #56625-2 100ul

Orders: order@signalwayantibody.comSupport: tech@signalwayantibody.com

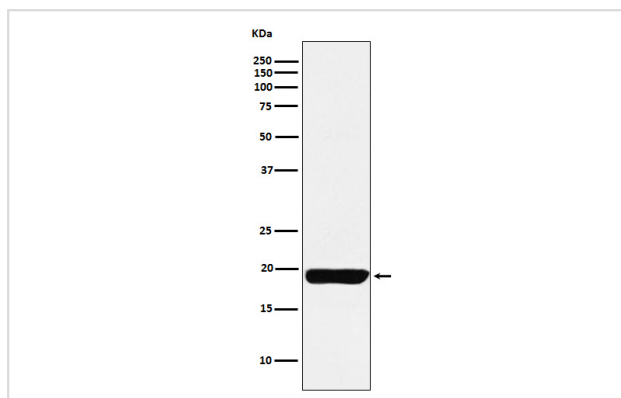
Description

Product Name	MYL9 Rabbit mAb
Host Species	Rabbit
Clonality	Monoclonal
Isotype	Rabbit IgG
Purification	Affinity-chromatography
Applications	WB IHC IP
Species Reactivity	Human Mouse Rat
Specificity	MYL9 Antibody detects endogenous levels of total MYL9
Immunogen Description	A synthesized peptide derived from human MYL9
Other Names	MLC2; CMH10;
Accession No.	Uniprot:P24844
Calculated MW	18kDa
Formulation	Rabbit IgG in phosphate buffered saline , pH 7.4, 150mM NaCl, 0.02% sodium azide and 50% glycerol.
Storage	Store at +4°C short term. Store at -20°C long term. Avoid freeze / thaw cycle.

Application Details

WB:1:500~1:2000IHC:1:50~1:200IP:1:50

Images



Western blot analysis of MYL9 expression in Human uterus lysate.

Product Description

Myosin regulatory subunit that plays an important role in regulation of both smooth muscle and nonmuscle cell contractile activity via its phosphorylation. Implicated in cytokinesis, receptor capping, and cell locomotion.

Note: This product is for in vitro research use only and is not intended for use in humans or animals.