

## MAG Rabbit mAb

Catalog No: #56627



Package Size: #56627-1 50ul #56627-2 100ul

Orders: [order@signalwayantibody.com](mailto:order@signalwayantibody.com)Support: [tech@signalwayantibody.com](mailto:tech@signalwayantibody.com)

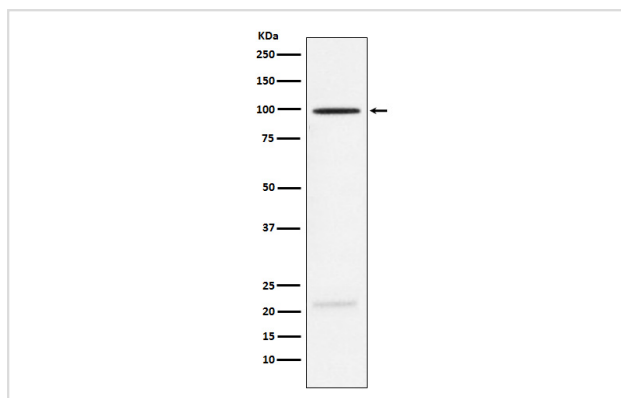
## Description

Product Name	MAG Rabbit mAb
Host Species	Rabbit
Clonality	Monoclonal
Isotype	Rabbit IgG
Purification	Affinity-chromatography
Applications	WB IP FC
Species Reactivity	Human Mouse Rat
Specificity	MAG Antibody detects endogenous levels of total MAG
Immunogen Description	A synthesized peptide derived from human MAG
Other Names	GMA; MAG; S MAG; SIGLEC4A; SPG75;
Accession No.	Uniprot:P20916
Calculated MW	100kDa
Formulation	Rabbit IgG in phosphate buffered saline , pH 7.4, 150mM NaCl, 0.02% sodium azide and 50% glycerol.
Storage	Store at +4°C short term. Store at -20°C long term. Avoid freeze / thaw cycle.

## Application Details

WB:1:500~1:2000IP:1:50FC:1:20

## Images



Western blot analysis of MAG expression in Rat brain lysate.

## Product Description

Adhesion molecule in postnatal neural development that mediates sialic-acid dependent cell-cell interactions between neuronal and myelinating cells. Preferentially binds to alpha-2,3-linked sialic acid.

---

Note: This product is for in vitro research use only and is not intended for use in humans or animals.