

AHA1 Rabbit mAb

Catalog No: #56628

Package Size: #56628-1 50ul #56628-2 100ul

Orders: order@signalwayantibody.com

Support: tech@signalwayantibody.com

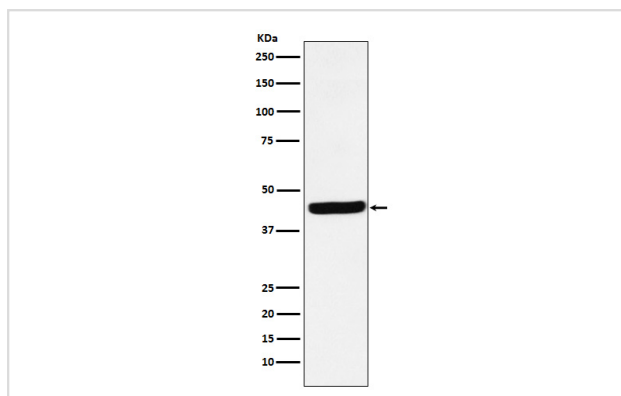
Description

Product Name	AHA1 Rabbit mAb
Host Species	Rabbit
Clonality	Monoclonal
Isotype	Rabbit IgG
Purification	Affinity-chromatography
Applications	WB IP
Species Reactivity	Human Mouse Rat
Specificity	AHA1 Antibody detects endogenous levels of total AHA1
Immunogen Description	A synthesized peptide derived from human AHA1
Other Names	AHA 1; AHA1; AHSA 1; Ahsa1; C14orf3; HSPC322; p38;
Accession No.	Uniprot:O95433
Calculated MW	43kDa
Formulation	Rabbit IgG in phosphate buffered saline , pH 7.4, 150mM NaCl, 0.02% sodium azide and 50% glycerol.
Storage	Store at +4°C short term. Store at -20°C long term. Avoid freeze / thaw cycle.

Application Details

WB:1:500~1:2000IP:1:40

Images



Western blot analysis of AHA1 expression in HepG2 cell lysate.

Product Description

Cochaperone that stimulates HSP90 ATPase activity (By similarity). May affect a step in the endoplasmic reticulum to Golgi trafficking.

Note: This product is for in vitro research use only and is not intended for use in humans or animals.