

## ATP1A3 Rabbit mAb

Catalog No: #56629

Package Size: #56629-1 50ul #56629-2 100ul

Orders: [order@signalwayantibody.com](mailto:order@signalwayantibody.com)Support: [tech@signalwayantibody.com](mailto:tech@signalwayantibody.com)

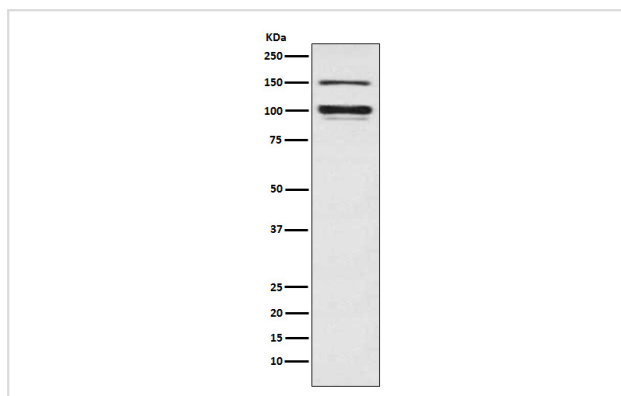
## Description

Product Name	ATP1A3 Rabbit mAb
Host Species	Rabbit
Clonality	Monoclonal
Isotype	Rabbit IgG
Purification	Affinity-chromatography
Applications	WB
Species Reactivity	Human Mouse Rat
Specificity	ATP1A3 Antibody detects endogenous levels of total ATP1A3
Immunogen Description	A synthesized peptide derived from human ATP1A3
Other Names	AHC2; Atp1a3; DYT12; RDP;
Accession No.	Uniprot:P13637
Calculated MW	100-150kDa
Formulation	Rabbit IgG in phosphate buffered saline , pH 7.4, 150mM NaCl, 0.02% sodium azide and 50% glycerol.
Storage	Store at +4°C short term. Store at -20°C long term. Avoid freeze / thaw cycle.

## Application Details

WB: 1:500~1:2000

## Images



Western blot analysis of ATP1A3 expression in Rat brain lysate.

## Product Description

This is the catalytic component of the active enzyme, which catalyzes the hydrolysis of ATP coupled with the exchange of sodium and potassium ions across the plasma membrane. This action creates the electrochemical gradient of sodium and potassium ions, providing the energy for active transport of various nutrients.

---

Note: This product is for in vitro research use only and is not intended for use in humans or animals.