

REA Rabbit mAb

Catalog No: #56631

Package Size: #56631-1 50ul #56631-2 100ul

Orders: order@signalwayantibody.comSupport: tech@signalwayantibody.com

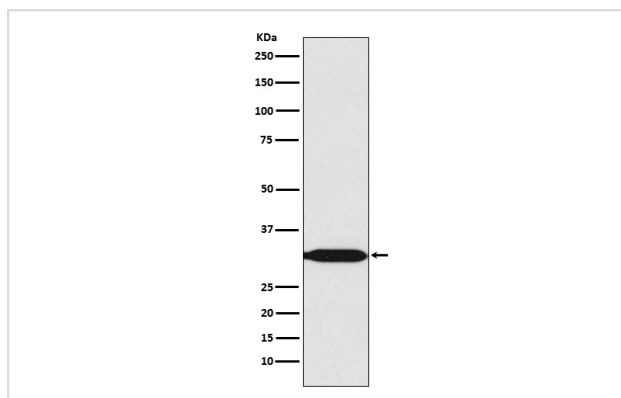
Description

| | |
|-----------------------|--|
| Product Name | REA Rabbit mAb |
| Host Species | Rabbit |
| Clonality | Monoclonal |
| Isotype | Rabbit IgG |
| Purification | Affinity-chromatography |
| Applications | WB IHC ICC/IF |
| Species Reactivity | Human Mouse Rat |
| Specificity | REA Antibody detects endogenous levels of total REA |
| Immunogen Description | A synthesized peptide derived from human REA |
| Other Names | BAP; Bap37; BCAP 37; D prohibitin; p22; Phb2; PNAS 141; Prohibitin 2; |
| Accession No. | Uniprot:Q99623 |
| Calculated MW | 30kDa |
| Formulation | Rabbit IgG in phosphate buffered saline , pH 7.4, 150mM NaCl, 0.02% sodium azide and 50% glycerol. |
| Storage | Store at +4°C short term. Store at -20°C long term. Avoid freeze / thaw cycle. |

Application Details

WB:1:1000~1:5000IHC:1:50~1:200ICC/IF:1:50~1:200

Images



Western blot analysis of REA expression in HeLa cell lysate.

Product Description

Acts as a mediator of transcriptional repression by nuclear hormone receptors via recruitment of histone deacetylases (By similarity). Functions as an estrogen receptor (ER)-selective coregulator that potentiates the inhibitory activities of antiestrogens and represses the activity of estrogens.

Note: This product is for in vitro research use only and is not intended for use in humans or animals.