

## CRABP1 Rabbit mAb

Catalog No: #56632

Package Size: #56632-1 50ul #56632-2 100ul

Orders: order@signalwayantibody.com

Support: tech@signalwayantibody.com

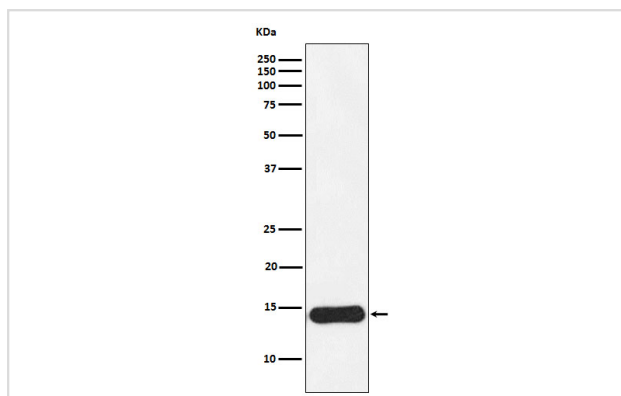
## Description

Product Name	CRABP1 Rabbit mAb
Host Species	Rabbit
Clonality	Monoclonal
Isotype	Rabbit IgG
Purification	Affinity-chromatography
Applications	WB IP
Species Reactivity	Human Mouse
Specificity	CRABP1 Antibody detects endogenous levels of total CRABP1
Immunogen Description	A synthesized peptide derived from human CRABP1
Other Names	CRABP; Crabp1; CRABP1; RBP5;
Accession No.	Uniprot:P29762
Calculated MW	14kDa
Formulation	Rabbit IgG in phosphate buffered saline , pH 7.4, 150mM NaCl, 0.02% sodium azide and 50% glycerol.
Storage	Store at +4°C short term. Store at -20°C long term. Avoid freeze / thaw cycle.

## Application Details

WB:1:500~1:2000IP:1:50

## Images



Western blot analysis of CRABP1 expression in MCF7 cell lysate.

## Product Description

Cytosolic CRABPs may regulate the access of retinoic acid to the nuclear retinoic acid receptors.

---

Note: This product is for in vitro research use only and is not intended for use in humans or animals.