

## AMHR2 Rabbit mAb

Catalog No: #56644

Package Size: #56644-1 50ul #56644-2 100ul

Orders: [order@signalwayantibody.com](mailto:order@signalwayantibody.com)Support: [tech@signalwayantibody.com](mailto:tech@signalwayantibody.com)

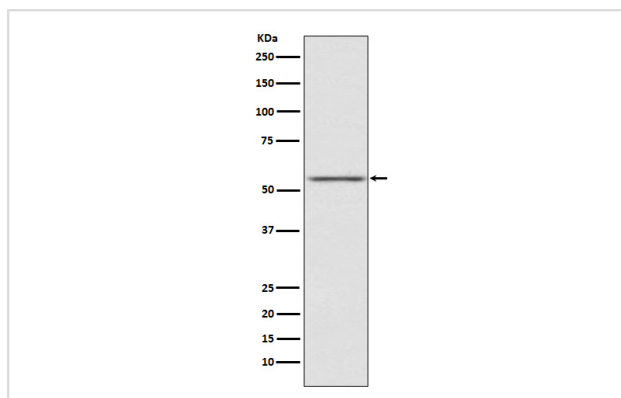
## Description

Product Name	AMHR2 Rabbit mAb
Host Species	Rabbit
Clonality	Monoclonal
Isotype	Rabbit IgG
Purification	Affinity-chromatography
Applications	WB
Species Reactivity	Human Mouse
Specificity	AMHR2 Antibody detects endogenous levels of total AMHR2
Immunogen Description	A synthesized peptide derived from human AMHR2
Other Names	AMHR; AMHR2; MISR2; MISRII; MRII;
Accession No.	Uniprot:Q16671
Calculated MW	55kDa
Formulation	Rabbit IgG in phosphate buffered saline , pH 7.4, 150mM NaCl, 0.02% sodium azide and 50% glycerol.
Storage	Store at +4°C short term. Store at -20°C long term. Avoid freeze / thaw cycle.

## Application Details

WB: 1:500~1:2000

## Images



Western blot analysis of AMHR2 expression in SK-OV-3 cell lysate.

## Product Description

On ligand binding, forms a receptor complex consisting of two type II and two type I transmembrane serine/threonine kinases. Type II receptors phosphorylate and activate type I receptors which autophosphorylate, then bind and activate SMAD transcriptional regulators. Receptor for anti-Muellerian hormone.

---

Note: This product is for in vitro research use only and is not intended for use in humans or animals.