

## CRYAA Rabbit mAb

Catalog No: #56645

Package Size: #56645-1 50ul #56645-2 100ul

Orders: [order@signalwayantibody.com](mailto:order@signalwayantibody.com)Support: [tech@signalwayantibody.com](mailto:tech@signalwayantibody.com)

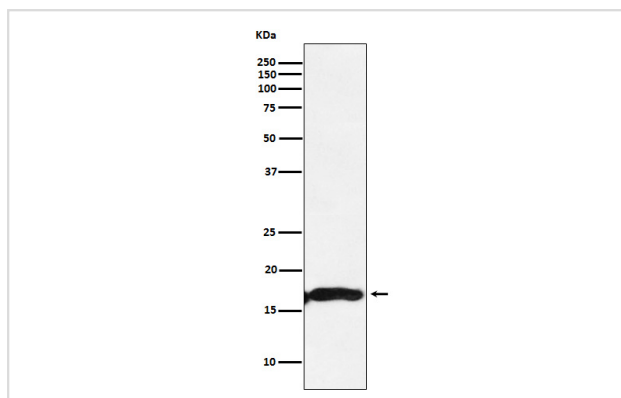
## Description

Product Name	CRYAA Rabbit mAb
Host Species	Rabbit
Clonality	Monoclonal
Isotype	Rabbit IgG
Purification	Affinity-chromatography
Applications	WB ICC/IF
Species Reactivity	Human Mouse Rat
Specificity	CRYAA Antibody detects endogenous levels of total CRYAA
Immunogen Description	A synthesized peptide derived from human CRYAA
Other Names	Acry 1; CRYA1; CRYAA; HspB4;
Accession No.	Uniprot:P02489
Calculated MW	17kDa
Formulation	Rabbit IgG in phosphate buffered saline , pH 7.4, 150mM NaCl, 0.02% sodium azide and 50% glycerol.
Storage	Store at +4°C short term. Store at -20°C long term. Avoid freeze / thaw cycle.

## Application Details

WB:1:500~1:2000 ICC/IF:1:50~1:200

## Images



Western blot analysis of CRYAA expression in Mouse eyeball lysate.

## Product Description

May contribute to the transparency and refractive index of the lens.

---

Note: This product is for in vitro research use only and is not intended for use in humans or animals.